



AS SAFFAT

COSMETICS SKINCARE

# FACEWARE

Tackle all complexion concerns. Flawlessly.

Faceware cosmetics with **SKIN PERFECTING** ingredients allowing you to put your best face forward.

Foundations and micro powders help **BRIGHTEN** dull uneven skin tones.

- Sheer to full coverage
- Lightweight
- Longwearing
- Paraben free
- Hypo-allergenic
- Fragrance free
- Sensitivity tested

# AS SAFFAT

COSMETICS SKINCARE



# CAMERA READY

FOUNDATION PRIMER

## FEATURES

- a makeup base that gives a matte finish
- silicone based primer
- apply before foundation on clean skin
- minimizes fine lines
- perfect for all skin types
- helps makeup last all day - flawless



clear      tinted

INGREDIENTS: Glycerin, Caprylyl Methicone (and) PEG-12 Dimethicone/PPG-20 Crosspolymer, Water, Caprylic/Capric Triglyceride, Phenoxyethanol, Caprylyl Glycol.

TIPS:  
Darker skin tones: we suggest "tinted".



# HI-DEF BALANCE

COLOR CORRECTION

## FEATURES

- color corrects and primes skin
- apply before foundation
- a light non-greasy skin color perfecter that improves skin appearance & balances skin tone
- green removes red/rosacea
- mauve removes yellow/olive skin
- yellow removes blue/bruising
- pink hi-lites and brightens dark skin tones



think pink      mauve'ish      mellow yellow      green light

INGREDIENTS: Aqua (Water), Propylene Glycol, Talc, Paraffinum Liquidum, Isopropyl Myristate, Ethylhexyl Palmate, Cetyl Esters, Hydrogenated Cottonseed Glyceride, Rosa Centifolia Flower Water, Stearic Acid, Magnesium Aluminum Silicate, Phenoxyethanol, Triethanolamine, Caprylyl Glycol, Chlorphenesin, Dimethicone, Cellulose Gum, Disodium Oleamide PEG-2 Sulfosuccinate, Sodium Dehydroacetate, Polyamin Sugar Condensate, Urea, Isotearic Acid, Benzophenone-4, Wheat Germ Glycerides, Tocopheryl Acetate, Sulfated Castor Oil, Stearoyltrimethylsilane, Stearyl Alcohol, Lithium Stearate. May contain: Titanium Dioxide, Iron Oxides, Ultramarines.



# PRIME TIME

EYE & LIP PRIMER

## FEATURES

- primer for eye and lip area
- prevents lipstick from feathering
- prevents eyeshadow wearing off or blending unevenly
- perfect for sensitive skins
- perfect for anyone who has trouble with eye makeup smudging
- helps keep shadow on all day



light-medium      dark and fabulous

INGREDIENTS: C15-19 Alkane, Polybutene, Beeswax, Silica, Calcium Aluminum Borosilicate, Ozokerite, Polyethylene, Phenoxyethanol (and) Caprylyl Glycol (and) Sorbic Acid, Bisabolol, Tocopheryl Acetate. May contain: Titanium Dioxide CI 77891, Bismuth Oxochloride CI 77163, Iron Oxide CI 77492, Iron Oxide CI 77491, Iron Oxide CI 77499.

TIPS:  
Apply sparingly in a light tapping motion.

# CORRECTOR QUAD

LIKE MAGIC



## FEATURES

- color correctors in a cream base
- medium coverage
- balances out – color corrects all skin tones and skin types
- green removes red/rosacea
- mauve removes yellow/olive skin
- yellow removes blue/bruising
- pink hi-lites and brightens dark skin tones



**INGREDIENTS:** Titanium Dioxide, Isohexyl Caprate, Ethylhexyl Palmitate, Nylon-12, Paraffin, Quartz, Octyldodecyl Stearate, Ozokerite, Cera Microcristallina, Isostearyl Behenate, Hydrogenated Castor Oil, Silica, PPG-12/SMDI Copolymer, Cera Carnauba, Retinyl Palmitate, Tocopherol. May contain: Iron Oxides, Ultramarines.

# CONCEALER TRIO



## FEATURES

- cream concealer in a trio
- full coverage
- matte finish
- set with powder to increase staying power



buffed cool ♥  
N2 N3 N45



warm front ♥  
C25 C3 C4



instant neutral ♥  
N5 N7 N8



sunsoaked  
C6 C7 C8



serious color  
C9 C95 N10



tobacco  
C9 C10 N11

**INGREDIENTS:** Ethylhexyl Palmitate, Isohexyl Caprate, Nylon-12, Paraffin, Octyldodecyl Stearate, Quartz, Ozokerite, Cera Microcristallina, Isostearyl Behenate, Hydrogenated Castor Oil, Silica, PPG-12/SMDI Copolymer, Retinyl Palmitate, Cera Carnauba, Tocopherol. May contain: Iron Oxides, Titanium Dioxide, Ultramarines.

# CONCEALER POTS

## & CORRECTOR POTS

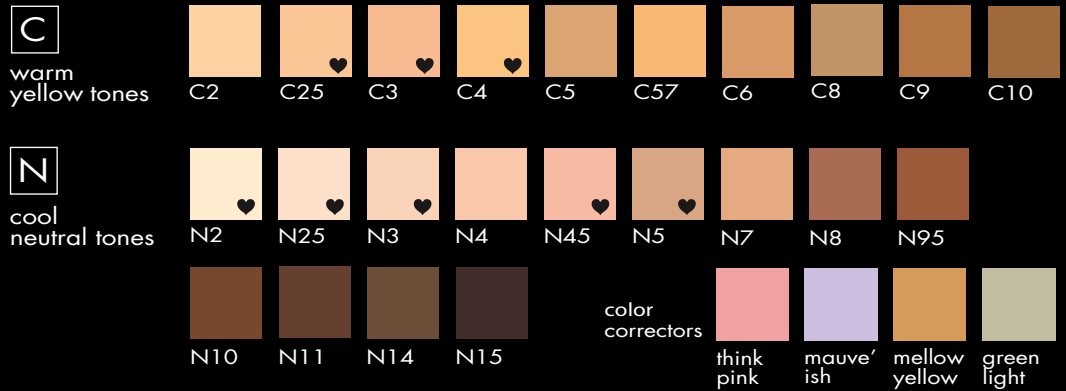


### FEATURES

- cream concealer
- full coverage
- matte finish
- available in trios or corrector quad
- set with powder to increase staying power

### TIPS:

Apply with concealer brush or the heat from your fingertips to give a perfect finish.



CONCEALER POT INGREDIENTS : Ethylhexyl Palmitate, Isohexyl Caprate, Nylon-12, Paraffin, Octyldodecyl Stearate, Quartz, Ozokerite, Cera Microcristallina, Isostearyl Behenate, Hydrogenated Castor Oil, Silica, PPG-12/SMDI Copolymer, Retinyl Palmitate, Cera Carnauba, Tocopherol. May contain: Iron Oxides, Titanium Dioxide, Ultramarines.  
 COLOR CORRECTOR INGREDIENTS: See Quad Concealer on page 7.

# LIQUID CONCEALER

## UNDER COVER



### FEATURES

- liquid concealer
- medium coverage
- quick dry
- water resistant
- longwear formula
- anti aging formula with collagen - helps reduce puffiness
- non transferable to clothes - stay put formula



INGREDIENTS: Aqua (water), Isododecane, Polybutene, Dimethicone, Glycerin, Cetyl PEG/PPG-10/ 1 Dimethicone, Polyglyceryl-4, Isostearate/ Cetyl PEG/PPG-10/ 1 Dimethicone/ Hexyl Laurate, Silica, Glyceryl Behenate/ Eicosadioate, Stearic Acid, Butylene Glycol, Distearidimonium Hectorite, Dimethicone Crosspolymer, Phenoxyethanol, Sodium Polyacrylate, Sodium Chloride, Sodium PCA, Sodium Lauroyl Glutamate, Sorbitan Sesquioleate, Propylene Carbonate, Sodium Hyaluronate, Tetrasodium EDTA, Tocopheryl Acetate, Iodopropyl Butylcarbamate. May Contain: Iron Oxides, Titanium Dioxide.

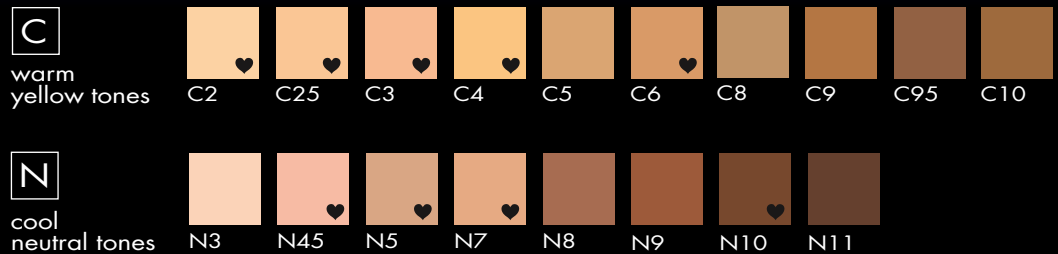


# FACE FOUNDATION

FACE MAKEUP

## FEATURES

- water based liquid foundation
- light to medium coverage
- contains antioxidant vitamin E
- contains wheat germ to improve skin's elasticity
- perfect for sensitive skins
- non comedogenic



## TIPS:

We always recommend using a sunscreen first. Our products do not contain any sunscreens. We advise an even application of sunscreen first for best sun damage prevention.

**INGREDIENTS:** Aqua (Water), Propylene Glycol, Talc, Paraffinum Liquidum, Isopropyl Myristate, Ethylhexyl Palmitate, Cetyl Esters, Hydrogenated Cottonseed Glyceride, Rosa Centifolia Flower Water, Stearic Acid, Magnesium Aluminum Silicate, Phenoxyethanol, Triethanolamine, Caprylyl Glycol, Chlorphenesin, Dimethicone, Cellulose Gum, Disodium Oleamido PEG-2 Sulfosuccinate, Sodium Dehydroacetate, Polyamines Sugar Condensate, Urea, Isotearic Acid, Benzophenone-4, Wheat Germ Glycerides, Tocopheryl Acetate, Sulfated Castor Oil, Stearoxtrimethylsilane, Stearyl Alcohol, Lithium Stearate. May contain: Titanium Dioxide, Iron Oxides, Ultramarines.

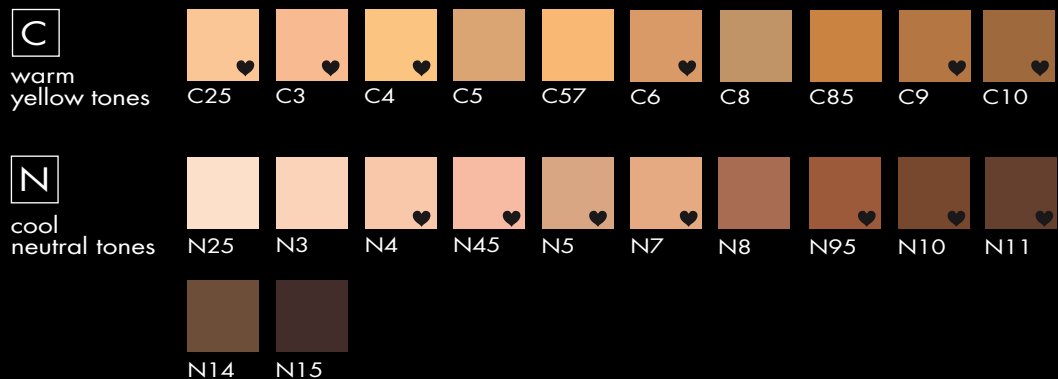


# CREAM FOUNDATION

COMPACT

## FEATURES

- cream based foundation in a compact
- full coverage
- matte finish
- dry skins recommend to use with camera ready to increase slip



## TIPS:

Apply with foundation or stipple brush and set with dual powder for full coverage.

**INGREDIENTS:** Ethylhexyl Palmitate, Isohexyl Caprate, Nylon-12, Paraffin, Octyldodecyl Stearate, Quartz, Ozokerite, Cera Microcristallina, Isostearyl Behenate, Hydrogenated Castor Oil, Silica, PPG-12/SMDI Copolymer, Retinyl Palmitate, Cera Carnauba, Tocopheryl Acetate. May contain: Iron Oxides, Titanium Dioxide, Ultramarines.

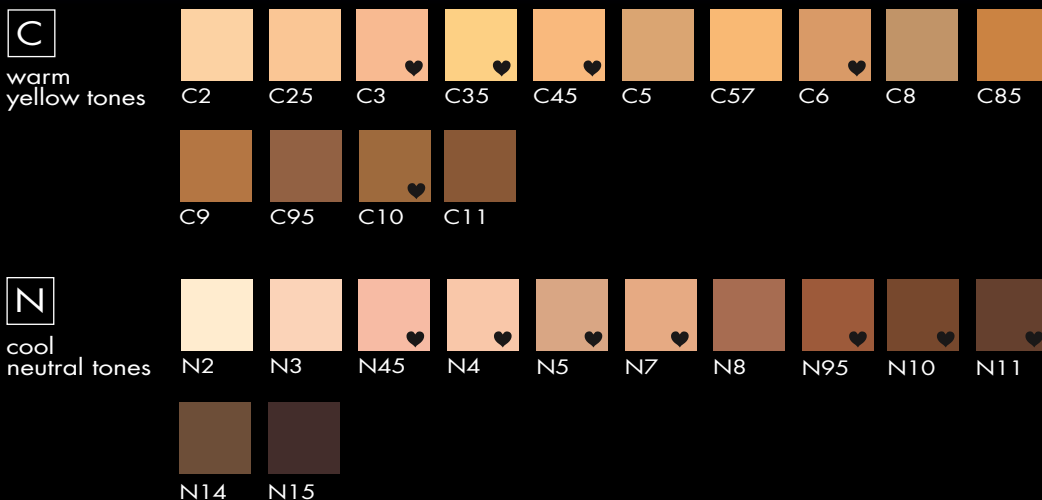


# DUAL POWDER

FULL COVERAGE FOUNDATION

## FEATURES

- foundation and powder all in one
- medium to full coverage
- use as a foundation with brush or sponge
- use for touch ups
- will not settle into fine lines
- use on top of any liquid or cream foundation to set or add coverage
- use dampened sponge for full coverage foundation (for oily skins)



INGREDIENTS: Talc, Mica, Titanium Dioxide, Dimethicone, Nylon-12, Aluminum Dimyristate, Zinc Stearate, Imidazolidinyl Urea, Tocopherol, Ascorbyl Palmitate. May contain: Iron Oxides, Chromium Oxide Greens, Ultramarines.



# HI-DEF FOUNDATION

LIQUID

## FEATURES

- medium to full coverage
- made for camera work and television intensity
- anti aging formula- contains collagen which helps with puffiness
- water resistant
- non-transferable - won't rub off on clothes



INGREDIENTS: Aqua (Water), Isododecane, Polybutene, Dimethicone, Glycerin, Cetyl PEG/PPG-10/1 Dimethicone, Polyglyceryl-4, Isostearate/ Cetyl PEG/PPG-10/1 Dimethicone/ Hexyl Laurate, Silica, Glyceryl Behenate/ Eicosadioate, Stearic Acid, Butylene Glycol, Distearidimonium Hectorite, Dimethicone Crosspolymer, Phenoxyethanol, Sodium Polyacrylate, Sodium Chloride, Sodium PCA, Sodium Lauroyl Glutamate, Sorbitan Sesquioleate, Propylene Carbonate, Sodium Hyaluronate, Tetrasodium EDTA, Tocopheryl Acetate, Iodopropyl Butylcarbamate. May contain: Iron Oxides, Titanium Dioxide.

## TIPS:

For added coverage set with co-ordinating dual powder shade or loose powder shade.

# BOLD BROWS

Never be afraid to raise a few brows.

**DEFINE** your arches.

- **Brow Shadows**
- **Brow Wax Pomade**
- **Brushes**
- **Stencils**
- **Pencils**
- **Tinted Shaper Gel**

Impeccably groomed brows create a modern clean look and

**GET PEOPLE TALKING.**

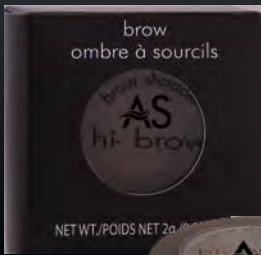
**AS SAFFAT**

COSMETICS SKINCARE



# BROW SHADOW

HI-BROW POWDER



## FEATURES

- formulated to give brows a natural definition
- perfect formula to work with brow stencils
- matte powder formula to fill in uneven brow line



## TIPS:

We suggest using our brow angle brush #15.

INGREDIENTS: Talc, Mica, Octyldodecyl Stearoyl Stearate, Octyldodecyl Stearate, Zinc Stearate, Phenoxyethanol, Boron Nitride, Silica, Caprylyl Glycol, Sorbic Acid. May contain: Iron Oxides, Yellow #5 Lake, Blue #1 Lake, Red #40 Lake, Titanium Dioxide, Bismuth Oxide, Chromium Oxide Green, Chromium Hydroxide Green, Ferric Ferrocyanide, Manganese Violet, Ultramarines, Tin Oxide, Bronze Powder, Aluminum Powder.

# BROW STENCILS

STENCIL KIT



Brush included!

## FEATURES

- a kit for mistake proof perfectly arched brows
- 6 styles included in kit
- easy to use

## DIRECTIONS

1. place selected stencil on your brow
2. brush brow powder in both directions, applying lightly to start
3. gently remove stencil
4. with angle brush apply brow pomade to keep brows in place

## STENCILS



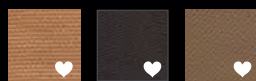


# PENCIL BROW

BROW LINER

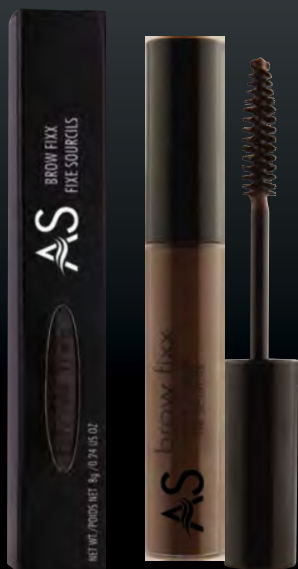
## FEATURES

- a slightly harder texture perfect for feathering effect
- built in grooming brush on lid
- use before or after hi-brow shadow
- made in Germany



blonde    brunette taupe

**INGREDIENTS:** Hydrogenated Vegetable Glycerides, Talc, Behenyl Alcohol, Isopropyl Myristate, Stearalkonium Hectorite, Propylene Carbonate, Methyl Paraben, Propyl Paraben, BHA. May contain: Mica, Ultramarine Blue, Titanium Dioxide, Iron Oxides, Manganese Violet, Ferric Ferrocyanide, Carmine, Aluminum Powder, Silica.

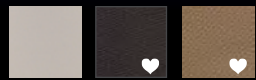


# BROW FIXX

TINT & SHAPER

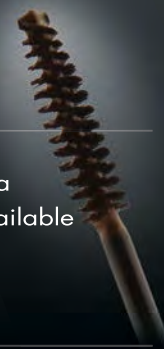
## FEATURES

- a tinted gel formula
- tames and fills in brows
- clear can be used as mascara
- blonde & brunette shades available



clear    brunette    blondie

**INGREDIENTS:** Water (Aqua), Cera Alba (Beeswax), Acacia Senegal Gum, Stearic Acid, Acrylates/Ethylhexyl Acrylate Crosspolymer, Cetyl Alcohol, VP/Hexadecene Copolymer, Sorbitol, Phenoxyethanol, Caprylyl Glycol, Chlorphenesin, Copernicia Cerifera (Carnauba) Wax, Hydroxyethylcellulose, Laureth-23, Hydrogenated Polyisobutene, Aminomethyl Propanediol, Magnesium Aluminum Silicate, Disodium EDTA, Iodopropyl Butylcarbamate, Tocopheryl Acetate, Simethicone, Parfum. May contain: Iron Oxides.



# BROW WAX

POMADE

## FEATURES

- clear brow wax to tame brows
- enhances a clean modern line
- apply after brow shadow
- easy to apply with angle brow brush #15
- apply sparingly



clear  
brow wax

**INGREDIENTS:** Octyldodecyl Stearoyl Stearate, Microcrystalline Wax, Caprylic Capric Triglyceride, Ricinus Communis (Castor) Seed Oil, Cera Alba, Boron Nitride, Silica, Euphorbia Cerifera (Candelilla) Wax, Ozokerite Wax, Silica, Copernicia Cerifera (Carnauba) Wax, Phenoxyethanol, Titanium Dioxide, Caprylyl Glycol, Octyldodecanol, Mica, Tocopheryl Acetate, Isopropyl Myristate, Lauroyl Lysine, Simmondsia Chinensis (Jojoba) Seed Oil, Sorbic Acid. May contain: Iron Oxides.



# 3 WELL BROW

WITH APPLICATOR

FEATURES

- 1 brow shade, 1 brow highlight, 1 brow wax and angle applicator

BROW WOW



GODDESS



BROW DARLING



# 5 WELL BROW

WITH SPOOLIE

FEATURES

- brow beauty in one compact with mirror, double ended brow brush and spoolie
- 4 shades of brow shadows and our brow wax
- you choose the shades or pick our "The Brows Have It" collection of our 4 top selling brow shades

THE BROWS HAVE IT



# 2 WELL BROW

WITH TWEEZERS

FEATURES

- 1 shade of brow shadow, 1 brow wax pomade, mini tweezer and angle applicator



701 ♡  
blonde  
brow wax



702 ♡  
dark brunette  
brow wax



704 ♡  
ash brown  
brow wax



705  
auburn  
brow wax



706  
golden brown  
brow wax



707  
desert brown  
brow wax



708  
deep brown  
brow wax



709  
wine brown  
brow wax



710 ♡  
sandy blonde  
brow wax



711  
cool brown  
brow wax



712  
ginger  
brow wax



713  
black smoke  
brow wax



714  
kraken  
brow wax



715  
black brown  
brow wax

# EYES EYES EYES

The eyes are the windows to the soul.

**UTTERLY AMAZING EYES**  
by the most outstanding products available.

- Eyeshadows with over 200 highly pigmented shades
- Mascara formulas for specific needs
- Liquid eyeliners, 18 hour waterproof pencils that last
- Palettes in different combinations

**A S S A F F A T**

COSMETICS SKINCARE



# PENCIL EYE

KHOL LINER

## FEATURES

- premium quality pencils manufactured in Germany
- soft creamy khol formula
- hypo-allergenic formula which treats sensitive eyes



INGREDIENTS: Hydrogenated Vegetable Glycerides, Talc, Behenyl Alcohol, Isopropyl Myristate, Stearalkonium Hectorite, Propylene Carbonate, Methyl Paraben, Propyl Paraben, BHA. May contain: Mica, Ultramarine Blue, Titanium Dioxide, Iron Oxides, Manganese Violet, Ferric Ferrocyanide, Carmine, Aluminum Powder, Silica.

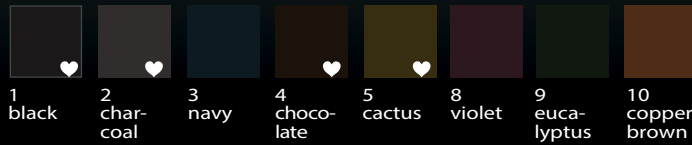


# PENCIL MECHANICAL EYE

WATERPROOF LINER

## FEATURES

- mechanical - no need to sharpen
- super creamy texture perfect for smokey eyes
- waterproof formula
- \* keep lid on tight to avoid drying out



INGREDIENTS: Cyclopentasiloxane, Synthetic Beeswax, Arachidyl Behenate, Distearidimonium Hectorite, Oryza Sativa (Rice) Bran Wax, Microcrystalline Wax, Mineral Oil, Methyl Paraben, Propyl Paraben, BHT. May contain: Iron Oxides 77491/77492/77499, Mica 77019, Ultramarines 770077, Titanium Dioxide 77891, Ferric Ferrocyanide 77510, Aluminum Powder 77000, Bismuth Oxychloride 77163, Black 2, Blue 1 Lake, Carmine 75470, Chromium Hydroxide Green 77289, Chromium Oxide Greens 77288, Manganese Violet 77742, Yellow 5 Lake, Zinc Oxide 77947.



# PENCIL GEL EYE

LONG LASTING

## FEATURES

- intensely pigmented formula that glides on creamy smooth
- dries on and lasts all day
- no need to reapply
- \* special sharpener required



INGREDIENTS: Iron Oxides 77491 / 77492 / 77499, Mica 77019, Black 2, Titanium Dioxide 77891, Ferric Ferrocyanide 77510, Carmine 75470, Blue 1 Lake, Ultramarines 77007, Copper Powder 77400, Bronze Powder 77400, Isododecane, Cyclopentasiloxane, PEG / PPD-19 / 19 Dimethicone, Synthetic Wax, Hydrogenated Polycyclopentadiene, Nylon -12, C20 - 40 Alcohols, Perfluorononyl Dimethicone, Polyglyceryl - 4 Diisostearate / Polyhydroxystearate / Sebacate, Polyethylene, Pentaerythrityl Tetra-DI-T-Butyl Hydroxyhydrocinnamate, Tocopherol, Silica.



# EYESHADOW

## TRIPLE MILLED SHADOW

### FEATURES

- triple milled
- highly pigmented
- all available as refills

- over 200 shades to choose from
- can be used wet as an eyeliner  
we suggest tranfix liquid transformer

### TEXTURES:

- P - Pearlized or frosted
- M - Matte, no pearl

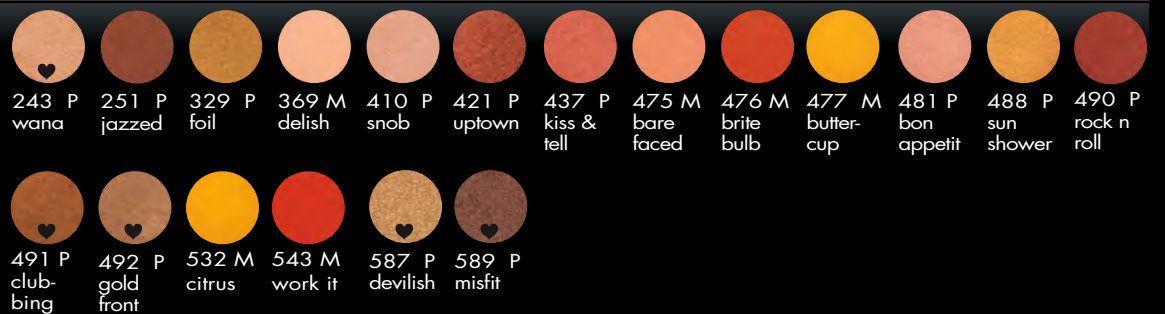
## NEUTRALS & HIGHLIGHTS



## BRONZES & BROWNS



## COPPERS, PEACHES & GOLDS



INGREDIENTS: Talc, Mica, Octyldodecyl Stearoyl Stearate, Octyldodecyl Stearate, Zinc Stearate, Phenoxyethanol, Boron Nitride, Silica, Caprylyl Glycol, Sorbic Acid. May Contain: Iron Oxides, Yellow 5 Lake, Blue 1 Lake, Red 40 Lake, Titanium Dioxide, Bismuth Oxochloride, Chromium Oxide Green, Chromium Hydroxide Green, Ferric Ferrocyanide, Manganese Violet, Ultramarines, Tin Oxide, Bronze Powder, Aluminum Powder.

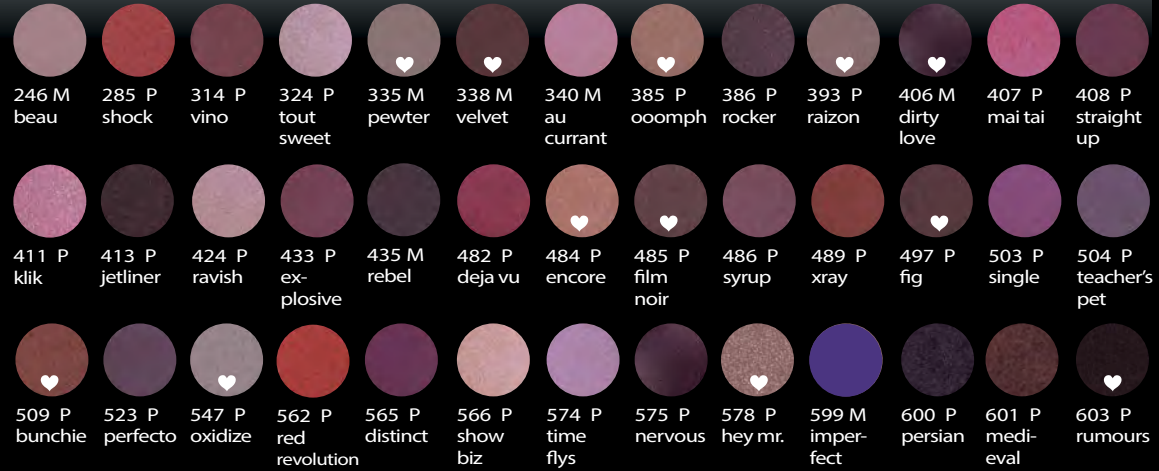
# EYESHADOW

TRIPLE MILLED SHADOW

## WARM & COOL PINKS



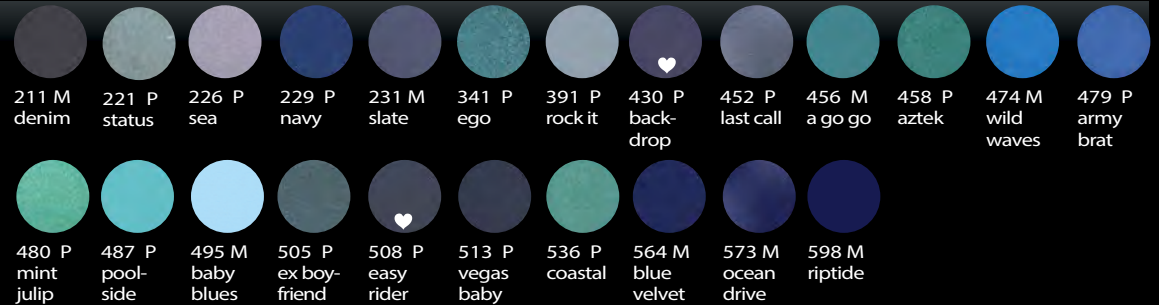
## WINES & PURPLES



## GREYS, CHARCOALS & BLACKS



## TURQUOISES & BLUES



## GREENS



# LASH EXTENDER

## PRIMER & CONDITIONER FEATURES

- a base coat before mascara
- amplifies lashes with length & volume
- can be worn alone at night as conditioner
- dye free
- developed to nourish and enhance lashes
- no plastics or sealers
- perfect for sensitive eyes



clear

**INGREDIENTS:** Aqua (Water), Cera Alba, Cera Carnauba, Stearic Acid, Glyceryl Stearate, Acrylates/Octylacrylamide Copolymer, Propanediol, Phenyl Trimethicone, Isocetyl Stearate, Aminomethyl Propanol, Caprylyl Glycol, Hexylene Glycol, Methylisothiazolinone, Phenoxyethanol, Iodopropynyl Butylcarbamate, Hydrolyzed Wheat Protein/PVP Crosspolymer, Hydrolyzed Vegetable Protein PG-Propyl Silanetriol, Panthenol, Tocopheryl Acetate, Penethyl Alcohol. May contain: Mica.

**TIPS:**  
To amplify mascara apply primer first, wait 30 seconds, repeat with second coat, wait 30 seconds then apply mascara.

# MASCARA INTENSE

## VOLUME & CURLING MASCARA

### FEATURES

- curling and volumizing formula
- contains natural polymers to stretch and hold
- water resistant (not waterproof)
- lashes shape for 12 hours increase curl 50%
- contains Vitamin A, C and E
- perfect for sensitive eyes/contact lens wearers



black   dark brown   hello sailor   cobalt

**INGREDIENTS:** Aqua (Water), Copernica Cerifera (Carnauba) Wax, Glyceryl Stearate, Acrylates Copolymer, Stearic Acid, Polybutene, Kaolin, Oleic Acid, Triethanolamine, Phenoxyethanol, Hydroxyethylcellulose, Ethylhexylglycerin, Caprylyl Glycol, Tocopheryl Acetate, Potassium Sorbate, Retinyl Palmitate, Panthenol, Simethicone, Trehalose, Ascorbyl Palmitate, Sodium Hyaluronate. May contain: Iron Oxide C335198.

**TIPS:**  
Use eye lash curler for crazy over the top long lashes.

# MASCARA LASH WARE

## EXTREME LENGTH MASCARA

### FEATURES

- lengthening cream formula
- water resistant (not waterproof)
- fiber free formula
- no plastics or sealers
- perfect for sensitive eyes/contact lens wearers



black   brown   navy   brite blue   clear

**INGREDIENTS:** Aqua (Water), Copernica Cerifera (Carnauba) Wax, Glyceryl Stearate, Acrylates Copolymer, Stearic Acid, Polybutene, Kaolin, Oleic Acid, Triethanolamine, Phenoxyethanol, Hydroxyethylcellulose, Ethylhexylglycerin, Caprylyl Glycol, Tocopheryl Acetate, Potassium Sorbate, Retinyl Palmitate, Panthenol, Simethicone, Trehalose, Ascorbyl Palmitate, Sodium Hyaluronate. May contain: Iron Oxide C335198.

**TIPS:**  
Use lash primer first for even more length!





# MASCARA WATERPROOF

M A S C A R A

## FEATURES

- creamy waterproof mascara provides extreme long lashes up to 60%
- formulated with Vitamin A, E and C
- enriched with Panthenol, Aloe Vera, Chamomile, Ginkgo & Ginseng extracts to moisturize, strengthen and nourish lashes



black  
night

INGREDIENTS: Isododecane, Aqua (Water), Copernicia Cerifera (Carnauba) Wax, Euphorbia Cerifera (Candelilla) Wax, Beeswax, Stearic Acid, Sorbeth-20 Beeswax, Ozokerite Wax, PVP/Eicosene Copolymer, Acrylates Copolymer, Polyisobutene, Triethanolamine, Cetyl Dimethicone Copolyol, Tocopheryl Acetate, Retinol Palmitate, Panthenol, Ascorbyl Palmitate, Aloe Barbadensis Leaf Extract, Chamomilla Recutita (Matricaria) Flower Extract, Panax Ginseng Root Extract, Ginkgo Biloba Leaf Extract, Phenoxyethanol, Potassium Sorbate, Disodium EDTA, Kaolin, Silica. May contain: Iron Oxide (CI 77499).



# MASCARA FULL BODY

M A S C A R A

## FEATURES

- volume boosting formula
- intense pigmented shades
- will not clump or flake
- creamy application
- curved brush loads lashes for a fanned out full body look



black



deep  
brown



marine  
navy



electric  
blue

INGREDIENTS: Aqua (Water), Copernicia Cerifera (Carnauba) Wax, Glyceryl Stearate, Acrylates Copolymer, Stearic Acid, Polybutene, Kaolin, Oleic Acid, Triethanolamine, Phenoxyethanol, Hydroxyethylcellulose, Ethylhexylglycerin, Caprylyl Glycol, Tocopheryl Acetate, Potassium Sorbate, Retinyl Palmitate, Panthenol, Simethicone, Trehalose, Ascorbyl Palmitate, Sodium Hyaluronate. May contain: Iron Oxide C335198.



COMING  
SUMMER 2014



# MASCARA GLITTER LINER

M A S C A R A A N D L I N E R

## FEATURES

- wear as a mascara or glitter eyeliner
- quick drying
- glamorous on the tips of lashes
- wear alone or for far more drama apply just above a black or smokey liner



sterling

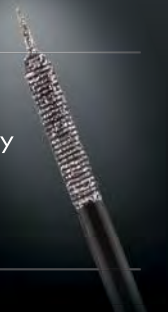


gold-  
star



blue  
metal

INGREDIENTS: Aqua (Water), Glycerin, PVP, Glyceryl Polyacrylate, Propylene Glycol, Calcium Sodium Borosilicate, Polyethylene Terephthalate, Acrylates Copolymer, Chamomile Extract, Rosemary Extract, Cucumber Extract, Triethanolamine, Diazolidinyl Urea, Iodopropynyl Butylcarbamate, 2-Bromo-2-Nitropropane-1,3-Diol. May contain: Mica, Titanium Dioxide, Iron Oxides, Solvent Black 28, Solvent Yellow, Solvent Red 135, Solvent Blue 36.





# TRANS-FIXX

LIQUID TRANSFORMER

## FEATURES

- a clear glycerin solution that transforms any powder product into a liquid eyeliner
- apply over entire lid for extreme wear eyeshadow
- fine tip brush applicator

## HOW TO

- dip brush along the outer rim of the shadow or pigment for a perfect line

## TIPS

Always wipe off brush before placing back into liquid never pour transfix directly onto shadow.

INGREDIENTS: Aqua (water) Propylene Glycol, Imidazolidinyl Urea, Polyvinylpyrrolidone, Quaternium-15, Citric Acid.

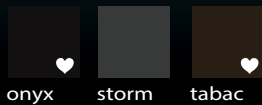


# LIQUID LINER

PEN TIP APPLICATOR

## FEATURES

- long wear formula
- quick drying
- ink like formula
- easy to use marker tip applicator, perfect for unsteady hands



INGREDIENTS: Aqua (Water), Glycerin, Anthemis Nobilis Flower Water, PEG-33, PEG-8 Dimethicone, Acrylates/Beheneth-25 Methacrylate Copolymer, Silica, Phenoxyethanol, Triethanolamine, PEG-14, Disodium Cetyl Phenyl Ether Disulfonate. May contain: Mica C177019, Iron Oxide C177499, Black 2 C177266.

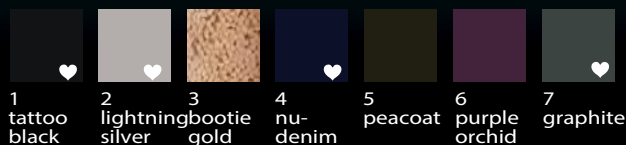


# LIQUID LINER DEFINE

PRECISION BRUSH APPLICATOR

## FEATURES

- long wear formula
- quick drying
- fine tip applicator for detail application
- both cream colours and metallic shades available



INGREDIENTS: Aqua (Water), Glycerin, Anthemis Nobilis Flower Water, PEG-33, PEG-8 Dimethicone, Acrylates/Beheneth-25 Methacrylate Copolymer, Silica, Phenoxyethanol, Triethanolamine, PEG-14, Disodium Cetyl Phenyl Ether Disulfonate. May contain: Mica C177019, Iron Oxide C177499, Black 2 C177266.



# CREAM EYELINER

POWDER FINISH

## FEATURES

- these smudge like liners are inbetween a shadow and a liquid liner
- use as a smokey shadow
- use as a cream eyeliner - dip small angle brush, push product along lash line
- use as a base with co-ordinating eyeshadow on top for 24 hour wear



## TIPS:

Airtight container keep lid on tight to avoid dryout.

INGREDIENTS: Isoeicosane, Calcium Aluminum Borosilicate, C12-15 Alkyl Benzoate, Copernicia Cerifera (Carnauba) Wax, Talc, Stearalkonium Hectorite, Phenoxyethanol, Caprylyl Glycol, Propylene Carbonate, Sorbic Acid. May contain: Titanium Dioxide, Iron Oxides, Ultramarines.



# STAR CRYSTALS

LOOSE GLITTER

## FEATURES

- apply crystals on top of lipstick with clear gloss
- apply to face and body with glitter drops - clear glamour gel (see below)
- use with hair gel and apply to hair
- use with clear nail enamel to give nails a sparkling finish



## TIPS:

To adhere star crystals, use clear gel & gloss kit below.

INGREDIENTS: Polyethylene, Terephthalate, Isobutylphenoxy Epoxy Resin, Aluminum.



# CLEAR GEL & GLOSS KIT

MAKE EM' STICK

## FEATURES

- apply crystals on top of lipstick with clear gloss
- apply to face and body with quick dry gel

code: GDLG

GLOSS INGREDIENTS: Polybutene, Pentaerythrityl Tetraisoostearate, Tridecyl Trimellitate, C18-36 Acid Triglyceride, Ricinus Communis (Castor) Seed Oil, Propylene Glycol, Vanillin, Sodium Saccharin, Ascorbyl Palmitate, Tocopherol. May contain: Mica, Silica, Bismuth Oxychloride, Calcium Aluminum Borosilicate, Titanium Dioxide, Iron Oxides, Carmine, Blue 1 Lake, Yellow 5 Lake, Yellow 6 Lake, Blue 1 Lake, Red 6, Red 6 Lake, Red 7, Red 7 Lake, Red 22 Lake, Red 27 Lake, Red 28 Lake, Red 30 Lake, Red 33 Lake.

GEL INGREDIENTS: Aqua (Water), Polyethylene Terephthalate, Propylene Glycol, Triethanolamine, Carbomer, Diazolidinyl Urea and Iodopropynyl Butylcarbamate.

# 5 WELL EYESHADOW

## FEATURES

- non-refillable
- our best selling shades ready to sell in our color co-ordinated sets. Gorgeous!

### BABY GOT BLUE EYES



226 P sea    508 P easy rider    513 P vegas baby    519 P perfection    514 P frisky

### BEHIND THESE HAZEL EYES



247 P shiver    510 P moon beam    380 P romanza    506 P date night    431 P fierce

### BROWN EYED GIRL



324 P tout sweet    523 P perfecto    393 P raizon    505 P ex boyfriend    522 P fearless

### DIAMONDS DARLING ♥



500 P white star    388 P tiara    389 P jeannie    464 P carbon    413 P jetliner

### GLAMAZON ♥



207 P wisper    243 P wana    396 P turkish    355 P beige mist    405 P rusty nail

### GREEN EYED LADY



423 P popsicle    349 P oh yeah    486 P syrup    432 P painted    400 P the bomb

### PINCH ME I'M DREAMING ♥



415 P hot pants    414 P way cool    419 M berlin    416 M fur vest    286 M cactus

### PLUM CRAZY



483 P playboy    484 P encore    485 P film noir    497 P fig    493 M brownie

### POWDER CAKES ♥



261 M pebbles    273 M latte    306 M merlot    260 M motive    281 M savanna

### PRECIOUS METALS



499 P black star    500 P white star    509 P bunchie    507 P cinderella    508 P easy rider

### SOFT YET SEXY ♥



360 M lover    267 M faith    338 M velvet    335 M pewter    283 M chamois

### STARS IN YOUR EYES ♥



470 P big time    465 P big daddy    471 P star quality    461 P sin city    436 P beachy



# EYE SHIMMER CREAM

## FEATURES

- shimmering cream eyeshadow
- creates a long wear effect when applied before co-ordinating eyeshadow
- more intense pearl than face hilitte
- try as a highlight anywhere you want a pop of glimmer



1 14k gold    2 pure gold    3 copper    4 white diamond baby    5 oh    6 dusk    10 gleamer    11 provoke    12 itsy    13 swank    14 glow up    16 run way    26 heart strings

## TIPS:

Put in corner of eye for pop of shimmer. Can be worn on top of lipstick for shimmer effect

INGREDIENTS: Isopropyl Myristate, Petrolatum, Silica, Lanolin Oil, Mica, Isopropyl Lanolate, Euphorbia Cerifera (Candelilla) Wax, Ozokerite, Copernicia Cerifera (Carnauba) Wax, Bees Wax, Hydroxylated Lanolin, Acetylated Lanolin Alcohol, Benzoic Acid, BHT. May Contain: Titanium Dioxide, Iron Oxides, Carmine, Ultramarines, Manganese Violet, Bismuth Oxychloride, Ferric Ferrocyanide, Ferric Ammonium Ferrocyanide, Chromium Oxide Greens, Chromium Hydroxide Green, FD&C Yellow 5 Lake, FD&C Blue 1 Lake.

# CHEEKS



When life becomes too complicated  
just relax and **get your blush on.**

- Clean matte - use powder
- Steamy & Dewy - use cream
- Long Wear Translucent
- Instant face lift - use sheer glow

AS SAFFAT

COSMETICS SKINCARE



# BLUSH

TRIPLE MILLED

FEATURES

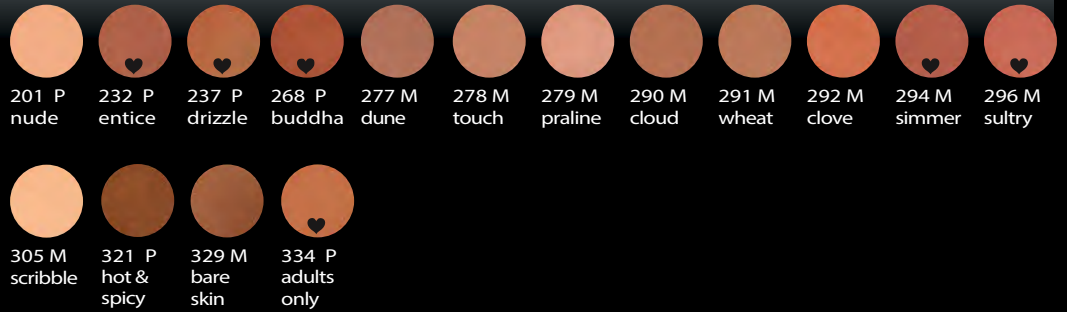
- tripled milled fine powders
- highly pigmented
- use after face powder
- 80 shades available
- lightweight texture glides smoothly and evenly

TEXTURES:

P - Pearlized or frosted

M - Matte

## NEUTRALS & BRONZES



## WARM PINKS, PEACHES & CORALS



## COOL PINKS, MAUVES & REDS



INGREDIENTS: Talc, Mica, Zinc Stearate, Octyldodecyl Stearoyl Stearate, Octyldodecyl Stearate, Phenoxyethanol, Caprylyl Glycol, Sorbic Acid. May contain: Titanium Dioxide, Iron Oxides, Red 6 Lake, Red 7 Lake, Red 27 Lake, Blue 1 Lake, Yellow 5 Lake, Yellow 6 Lake, Bismuth Oxchloride, Chromium Oxide Green, Chromium Hydroxide Green, Ferric Ferrocyanide, Manganese Violet, Ultramarines, Tin Oxide, Bronze Powder, Aluminum Powder



# UNIVERSAL BLUSH

CUSTOM COLOUR

FEATURES

- sheer translucent coverage
- flattering to most skin tones
- contains no titanium so NO chalkiness
- tested on all complexions



700  
universal

INGREDIENTS: Talc, Mica, Zinc Stearate, Octyldodecyl Stearoyl Stearate, Octyldodecyl Stearate, Phenoxyethanol, Caprylyl Glycol, Sorbic Acid. May contain: Titanium Dioxide, Iron Oxides, Red 6 Lake, Red 7 Lake, Red 27 Lake, Blue 1 Lake, Yellow 5 Lake, Yellow 6 Lake, Bismuth Oxchloride, Chromium Oxide Green, Chromium Hydroxide Green, Ferric Ferrocyanide, Manganese Violet, Ultramarines, Tin Oxide, Bronze Powder, Aluminum Powder



blush  
fard à joues



NET WT./POIDS NET 6g./0.38oz



# SPOT LIGHT

SHIMMER POWDER

## FEATURES

- triple milled formula
- more pearlized than blush
- can be used as illuminator anywhere on face or body
- sheer and translucent sheen
- can be used on eyes



501 P holly-wood  
 502 P cleo-patra  
 503 P chick lit  
 504 P papa-razzi  
 505 P night life  
 506 P soft spun  
 507 P exotica

INGREDIENTS: Talc, Mica, Zinc Stearate, Octyldodecyl Stearoyl Stearate, Octyldodecyl Stearate, Phenoxyethanol, Caprylyl Glycol, Sorbic Acid. May contain: Titanium Dioxide, Iron Oxides, Red #6 Lake, D&C Red #7 Lake, Red #27 Lake, Blue #1 Lake, Yellow #5 Lake, Yellow #6 Lake, Bismuth Oxochloride, Chromium Oxide Green, Chromium Hydroxide Green, Ferric Ferrocyanide, Manganese Violet, Ultramarines, Tin Oxide, Bronze Powder, Aluminum Powder.



cheek cream  
crème joues



NET WT./POIDS NET 10g./0.35oz



# COLOR POTS

CREAM CHEEK COLOUR

## FEATURES

- creamy color for cheeks
- natural matte - sheer shades
- perfect for normal to dry skins
- apply with foundation brush
- not suggested for oily skins



60 au fraiche  
 61 vice versa  
 62 dipping cream  
 63 sweet cheeks

INGREDIENTS: Paraffin Jelly, Titanium Dioxide, Lipstick Base (Blend of waxes/oils), Yellow #5 Aluminium Lake with Castor Oil, Isopropyl Myristate, Methicone/Silicone Powder, Red #7 Calcium Lake With Castor Oil, Lanolin Oil, C33-5320 Russet Iron Oxide with Castor Oil, Vanillin Crystals, Butylated Hydroxy Toluene, Phenoxyethanol, Caprylyl Glycol, Sorbic Acid. May contain: Iron Oxides, Titanium Dioxide, Ultramarines.



FACE HILITES  
REFLETS VISAGE CRÈME



NET WT./POIDS NET 10g./0.35oz



# FACE HILITES

3-IN-ONE CREAM SHIMMER

## FEATURES

- 3 in 1 shimmer
- for eyes-lips-cheeks
- cream to powder texture
- no oily feel- lightweight powder finish
- not as pearlized as eye shimmer
- apply with foundation brush



49 P cele-brity  
 50 P fantasy  
 52 P dare devil  
 53 P breathe  
 55 P flirty  
 56 P hi-glow  
 57 P pop tart  
 58 P foxy  
 59 P fairy tale

### TIPS:

Apply with foundation brush to highpoints of face or body can be used in corner of eyes for pop of color.

INGREDIENTS: Isopropyl Myristate, Petrolatum, Silica, Lanolin Oil, Mica, Isopropyl Lanolate, Candelilla Wax, Ozokerite Wax, Carnuba Wax, Bees Wax, Hydroxylated Lanolin, Acetylated Lanolin Alcohol, Benzoic Acid, Creamy Vanilla (Fragrance), BHT. May contain: Titanium Dioxide, Iron Oxides, Carmine, Red 7 Aluminum Lake, ultramarines, Red 6 Barium Lake, Yellow 5 Aluminum Lake, Blue 1 Aluminum Lake, Red 36 Barium Lake.



# SHEER GLO

ILLUMINATING LOTION

## FEATURES

- use on face or decollete
- gives instant glow to all skin tones
- wear alone or on top of foundation
- gorgeous effect if mixed with liquid foundation
- especially amazing for mature/dry skins replaces youthful glow



- 1 movie star
- 2 paradise
- 3 glo pink
- 4 fake it
- 5 aphrodite

INGREDIENTS: Aqua (Water), Cyclopentasiloxane, Cyclohexasiloxane, Propylene Glycol, Dimethicone, Stearic Acid, Parfum, Triethanolamine, Glyceryl Stearate, Magnesium Aluminum Silicate, Isostearic Acid, Oleth-20, Steareth-2, Glycerin, Diazolidinyl Urea, Cellulose Gum, Xanthan Gum, Tocopheryl Acetate, Trisodium EDTA. May contain: Mica, Iron Oxides, Titanium Dioxide, Carmine, Red 30.



# DOUBLE DUTY

LIP & CHEEK CREAM

## FEATURES

- translucent cream color
- gorgeous on all skin tones
- can be worn on lips or cheeks
- for lips apply with lip brush or your pinky
- for cheeks apply with a foundation brush



- 1 tokyo red
- 2 lovey dovey
- 3 cheek trick
- 4 flash of fuschia
- 5 color jam
- 6 palm beach

INGREDIENTS: Propylene Glycol Dicaprylate/Dicaprate, Bis-Diglyceryl Polyacyladipate-2, Isododecane, Polymethyl Methacrylate, Kaolin, Silica, Ricinus Communis (Castor) Seed Oil, Cera Carnauba, Candelilla Cera, Cetyl Palmitate, Cera Alba, Distearidimonium Hectorite, Propylene Carbonate, Phenoxyethanol, Caprylyl Glycol, Tocopheryl Acetate, Ascorbyl Palmitate. May contain: Titanium Dioxide, Red 6, Red 6 Barium Lake, Red 7 Aluminum Lake, Red 27 Lake, Red 33 Lake, Iron Oxides, Yellow 5 Lake, Yellow 6 Lake.



# CHERRY BOMB

LIP & CHEEK TINT GEL

## FEATURES

- longwear gel formula for cheeks and lips
- sheer and translucent, won't rub off
- no glitter or shine- just healthy pinched glow
- if you like benefit – benetint, you will love this product



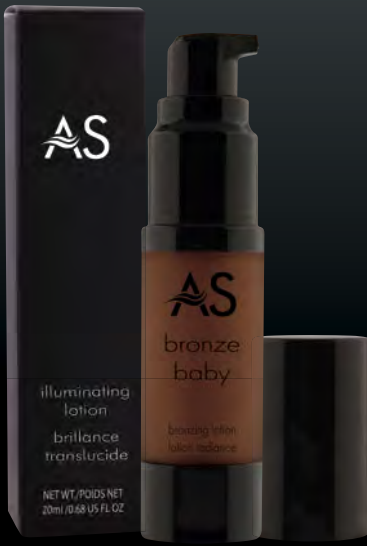
- 1 bombs away
- 2 licorice

LIP & CHEEK TINT INGREDIENTS: Aqua (Water), Propylene Glycol, Triethanolamine, Carbomer, Phenoxyethanol, Chamomile Recutita (Matricaria) Extract, Disodium EDTA. May contain: Red 4, Red 33, Blue 1, Brown 1.

## TIPS:

Apply before face powder on cheeks





# BRONZE BABY

GLO LOTION

FEATURES

- silky smooth lotion with a pearl finish
- instant bronze glow
- use on face or body
- can be worn on bare face
- works on all skin types
- not to be confused with a self tanner, wash off daily



sunny isles

INGREDIENTS: Aqua (Water), Cyclopentasiloxane, Cyclohexasiloxane, Propylene Glycol, Dimethicone, Stearic Acid, Parfum, Triethanolamine, Glyceryl Stearate, Magnesium Aluminum Silicate, Isostearic Acid, Oleth-20, Steareth-2, Glycerin, Diazolidinyl Urea, Cellulose Gum, Xanthan Gum, Tocopheryl Acetate, Trisodium EDTA. May contain: Mica, Iron Oxides, Titanium Dioxide, Carmine, Red 30.



# BRONZER COMPACT

PRESSED BRONZER

FEATURES

- triple milled powders that give a sheer fine sunfilled glow
- apply with a buffer or powder brush to the hi-points of the face where the sun naturally would
- 200 - works with most olive yellow based tones
- 300 - a medium matte toned
- 400 - a rich terracotta tone with flecks of gold
- 407 - works with most cool neutral tones, has a slight touch of pink
- 500 - a deep rich earthy tone for darker skins



200 P exotic blend  
300 M golden goddess  
407 P sun-kissed  
400 P terra cotta  
500 P instant sexy

INGREDIENTS: Talc, Mica, Zinc Stearate, Octyldodecyl Stearoyl Stearate, Octyldodecyl Stearate, Boron Nitride, Phenoxyethanol, Aluminum Starch Octenylsuccinate, Lauroyl Lysine, Silica, Caprylyl Glycol, Sorbic Acid. May contain: Titanium dioxide, Iron Oxides, Red #6 Barium Lake, Red #7 Aluminum Lake, Yellow #6 Aluminum Lake, Bismuth Oxychloride.

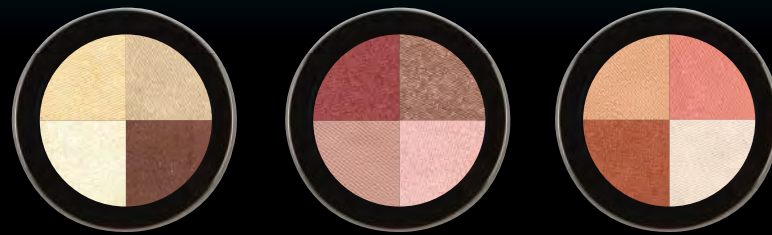


# QUATTROS

BLUSHER SHADOWS

FEATURES

- 4 tones blend to create a believable glow
- swirl a medium sized angled blush brush overall the hues.
- sweep up along cheekbones and onto temples
- can be used individually as eyeshadow



lust worthy

peek a boo ♥

warm breeze ♥

INGREDIENTS: Talc, Mica, Octyldodecyl Stearoyl Stearate, Octyldodecyl Stearate, Zinc Stearate, Phenoxyethanol, Boron Nitride, Silica, Caprylyl Glycol, Sorbic Acid. May Contain: Iron Oxides, Yellow #5 Aluminum Lake, Blue #1 Aluminum Lake, Red #40 Aluminum Lake, Titanium Dioxide, Bismuth Oxychloride, Chromium Oxide Green, Chromium Hydroxide Green, Ferric Ferrocyanide, Manganese Violet, Ultramarines, Tin Oxide, Bronze Powder, Aluminum Powder.

# TEMPTING LIPS

Vitamin E and a touch of vanillin extract for a hint of sweetness make these head turning bold and vibrant colors and coordinating pencils fun to wear.

AS SAFFAT

COSMETICS SKINCARE



# LIPSTICK

LUXURY

## FEATURES

- packed with the antioxidant vitamin E
- all available as refills
- over 200 shades to choose from
- contains natural vanillin extract

## TEXTURES

- C - Cream smooth and creamy
- P - Pearlized or frosted
- HG - Hi-gloss (super shiny and glossy, ultra lightweight)

## NUDES, NEUTRALS & BROWNS



## DEEP PINKS & NUDE MAUVES



## BERRIES & PLUMS



# LIPSTICK

LUXURY

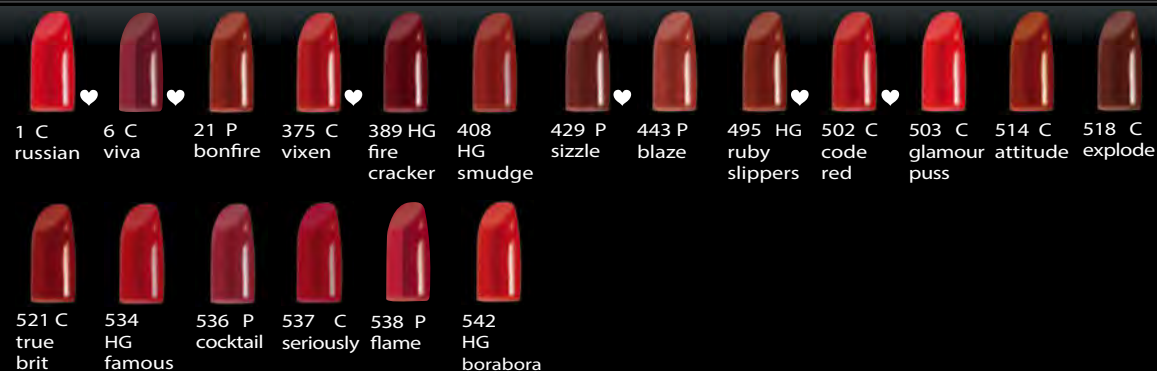
## PINKS & FUSCHIAS



## PEACHES, CORALS & COPPERS



## MERLOTS & REDS



INGREDIENTS: Ricinus Communis (Castor) Seed Oil, Oleyl Oleate, Candelilla Cera, Ozokerite Wax, Diisostearyl Dimer Dilinoleate, Paraffinum Liquidum, Lanolin, Methyl Glucose Sesquistearate, Oleyl Alcohol, Cera Carnauba, Prunus Armeniaca (Apricot) Kernel Oil, Vanillin, Isodecyl Neopentanoate, Tocopherol, Ascorbyl Palmitate, Aloe Barbadosis Leaf Extract. May contain: Mica, Titanium Dioxide, Iron Oxides, Silica, Yellow 5 Lake, Red 6, Red 6 Lake, Red 7 Lake, Red 21, Red 21 Lake, Red 27 Lake, Red 28 Lake, Red 33 Lake, Blue 1 Lake, Manganese Violet.

# LIPSTICK XTREME



## LUXURY FEATURES

- packed with the antioxidant vitamin E
- contains natural vanillin extract
- some shades available in refills
- extreme pigment and full coverage

## TEXTURES

- M - Matte, full coverage, long wear, no shine
- V - Super soft matte texture
- S - Extreme shine
- C - Primary
- PM - Pearlized metallic finish for modern look



# REFILLABLE PALLETS

## LIPSTICK REFILLS

### Features:

- magnetized and mirrored
- available in 3 wells and 5 wells
- 2 brush applicators included



INGREDIENINGREDIENTS: Ricinus Communis (Castor) Seed Oil, Oleyl Oleate, Mica, Lanolin Oil, Octyldodecanol, Propylene Glycol Ricinoleate, Euphorbia Cerifera (Candelilla) Wax, Isopropyl Lanolate, Oleyl Alcohol, Lanolin, Ozokerite, Isodecyl Neopentanoate, Cetyl Ethylhexanoate, Cera Alba, Paraffin, Polybutene, Copernicia Cerifera (Carnauba) Wax, Methyl Glucose Sesquistearate, Silica, Lauroyl Lysine, Ethyl Palmitate (and) Tibehenin (and) Sorbitan Isostearate (and) Palmitoyl Oligopeptide, Isodecyl Neopentanoate, Prunus Armeniaca (Apricot) Kernel Oil, Vanillin, Butyl Stearate, Tocopherol, Ascorbyl Palmitate. May contain (+/-): CI 77891, CI 77491, CI 77492, CI 77499, CI 15850:1, CI 15850:2, CI 77200, CI 19140, CI 45410:2, CI 15985:1, CI 15850, CI 42090.



# LIPGLOSS

## LONG LASTING

### FEATURES

- slightly tacky texture (designed for longwear)
- super pigmented
- contains antioxidant vitamin e
- contains natural vanillin extract
- stays on longer than any other lipgloss and retains its color
- C - Cream P - Pearlized

TIPS:  
Wear with co-ordinating lip liner to increase intensity and wearability.



# LIPGLOSS GLITTER

### FEATURES

- slightly tacky texture (designed for longwear)
- blinding shine packed with glitter crystals
- contains antioxidant vitamin E
- contains natural vanillin extract
- stays on longer than any other lipgloss



INGREDIENTS: Polybutene, Pentaerythrityl Tetraisoostearate, Tridecyl Trimellitate, C18-36 Acid Triglyceride, Ricinus Communis (Castor) Seed Oil, Propylene Glycol, Vanillin, Sodium Saccharin, Ascorbyl Palmitate, Tocopherol. May contain: Mica, Silica, Bismuth Oxychloride, Calcium Aluminum Borosilicate, Titanium Dioxide, Iron Oxides, Carmine, Blue 1 Lake, Yellow 5 Lake, Yellow 6 Lake, Blue 1 Lake, Red 6, Red 6 Lake, Red 7, Red 7 Lake, Red 22 Lake, Red 27 Lake, Red 28 Lake, Red 30 Lake, Red 33 Lake.

# LIPGLOSS POTTS

MIXX & MATCH

## FEATURES

- slightly tacky texture (designed for longwear)
- super pigmented
- contains antioxidant vitamin E
- contains natural vanillin extract
- stays on longer than any other lipgloss and retains its color
- mix & match to put in your own collection
- C - Cream P - Pearlized



## TIPS:

Mix & match to put in your own collection with our 6 well lipgloss pallet.



# MENTHA LIP BALM

MINT INFUSED

## FEATURES

- lips stay protected with a mint infused lipbalm
- hi shine - hi gloss
- clear no color
- no tacky feel
- contains natural peppermint oil for fresh breath
- contains a touch of sugar for sweet taste
- wear alone or on top of lipstick



clear



INGREDIENTS: Petrolatum, Polybutene, Hydrogenated Polyisobutene, Isododecane, Mentha Piperita (Peppermint) Oil, Propylene Glycol, Menthyl Lactate, Aroma, Distearidimonium Hectorite, Propylene Carbonate, Sodium Saccharin.



# LIP GLAZE

SLIP ON GLOSS

### FEATURES

- no tacky feel- hi shine gloss only
- extremely lightweight texture
- natural vanillin extract flavour
- glides on sheer and glossy
- lighter than our glossware formula
- C - Cream P - Pearlized



801 P  
peep  
show

802 C  
oh  
jessie

803 P  
patty  
cakes

805 P  
cat  
calls

807 C  
fly  
away

808 P  
ballet  
slipper

809 C  
butter  
fly

INGREDIENTS: Hydrogenated Polyisobutene, Lanolin Oil, Polyethylene, Hydrogenated Castor Oil, Quaternium-18 Hectorite, Simmondsia Chinensis (Jojoba) Seed Oil, Propylene Glycol, Propylene Carbonate, Sodium Saccharin, Aroma (Flavour). May contain: Mica, Calcium Sodium Borosilicate, Titanium Dioxide, Iron Oxides, Carmine, Yellow 5 Lake, Yellow 6 Lake, Blue 1 Lake, Red 6, Red 7, Red 7 Lake, Red 22 Lake, Red 28 Lake.

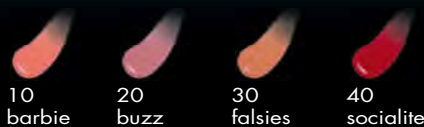


# LIPGLOSS LUXE WARE

LIPGLOSS

### FEATURES

- a super shine lipgloss with diamond like sparkle
- slightly tacky for longwear application
- more sheer in color than gloss ware formula
- contains natural vanillin extract



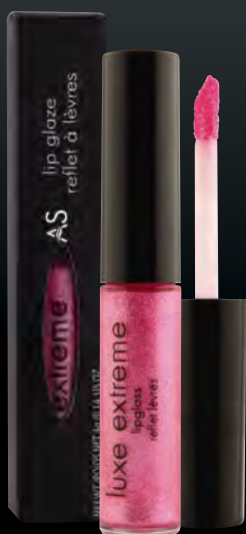
10  
barbie

20  
buzz

30  
falsies

40  
socialite

INGREDIENTS: Hydrogenated Polyisobutene, Lanolin Oil, Polyethylene, Hydrogenated Castor Oil, Quaternium-18 Hectorite, Simmondsia Chinensis (Jojoba) Seed Oil, Propylene Glycol, Propylene Carbonate, Sodium Saccharin, Aroma (Flavour). May contain: Mica, Calcium Sodium Borosilicate, Titanium Dioxide, Iron Oxides, Carmine, Yellow 5 Lake, Yellow 6 Lake, Blue 1 Lake, Red 6, Red 7, Red 7 Lake, Red 22 Lake, Red 28 Lake.



# LIPGLOSS LUXE EXTREME

LIPGLOSS

### FEATURES

- our richest and thickest texture in lipgloss
- apply sparingly in the center of lips or one light coat to avoid over saturation
- intense diamond sparkle
- contains natural vanillin extract
- over the top shimmer



161  
spiritual

162  
audition

163  
slip-on

INGREDIENTS: Hydrogenated Polyisobutene, Polybutene, Silica, Ethylene/Propylene/Styrene Copolymer, Butylene/Ethylene/Styrene Copolymer, Acrylates Copolymer, C2-15 Alkyl Benzoate, Squalane, Phenoxyethanol, Tocopherol, Acetate, Aroma. May contain: Calcium Aluminum Borosilicate, Titanium Dioxide, Iron Oxides, Carmine, Red 28 Lake, Red 30 Lake, Ascorbyl Palmitate, Tin Oxide.





# PENCIL LIP

## KHOL LINER

### FEATURES

- manufactured in Germany
- soft creamy khol formula
- hypo-allergenic formula perfect for sensitive lips



INGREDIENTS: Hydrogenated Vegetable Glycerides, Talc, Behenyl Alcohol, Isopropyl Myristate, Stearalkonium Hectorite, Propylene Carbonate, Methyl Paraben, Propyl Paraben BHA. May contain: Mica, Ultramarine Blue, Titanium Dioxide, Iron Oxides, Manganese Violet, Ferric Ferrocyanide, Carmine, Aluminum Powder, Silica.

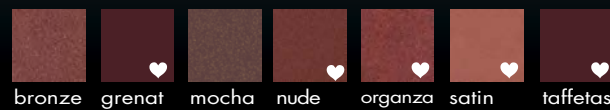


# PENCIL MECHANICAL LIP

## WATERPROOF LINER

### FEATURES

- creamy smudge proof formula
- new retractable applicator
- never have to sharpen
- waterproof formula
- \* keep lid on tight to avoid dry out



INGREDIENTS: Cyclopentasiloxane, Synthetic Beeswax, Oryza Sativa (Rice) Bran Wax, Arachidyl Behenate, Distardimonium Hectorite, Microcrystalline Wax, Dimethiconol, Mineral Oil, BHT. May contain: Iron Oxides 77491/77492/77499, Mica 77019, Manganese Violet 77742, Titanium Dioxide 77891, Red 7 Lake, Blue 1 Lake, Bismuth Oxochloride 77163, Carmine 75470, Red 21 Lake, Red 22 Lake, Red 28 Lake, Red 30, Red 6, Red 7, Yellow 5 Lake, Yellow 6 Lake, Zinc Oxide 77947.



# PENCIL DUO FIXX

## INVISIBLE LIP & BROW LINER

### FEATURES

- stops lipstick or lipgloss from feathering or bleeding
- totally invisible & colourless
- longwear and waterproof
- apply before lipstick or lipgloss
- perfect for any shade of brow
- keeps brows in place
- \* keep lid on tight to avoid dry out



INGREDIENTS: Cyclopentasiloxane, Microcrystalline Wax (Cera Microcristallina), Beeswax (Cera Alba), Euphorbia Cerifera (Candelilla) Wax, Hydrogenated Coco-glycerides, Polymethyl Methacrylate, Copernicia Cerifera (Carnauba) Wax, Copernicia Cerifera Cera, Sodium Potassium Aluminum Silicate, Trimethylsiloxysilicate, Myristyl Lactate, Silica, Dicaprylyl Carbonate, Distardimonium Hectorite, Myristyl Alcohol, Titanium Dioxide, Ethylhexyl Palmitate, Polyethylene, Propylene Carbonate, Tribehenin, Tocopherol, Carmine, Lecithin, Ascorbyl Palmitate, Glyceryl Stearate, Sorbitan Isostearate, Glyceryl Oleate, Citric Acid, Palmitoyl Oligopeptide.



MINERALS

 AAS SAFFAT

COSMETICS SKINCARE

# MINERAL FOUNDATION

PRESSED POWDER COMPACT

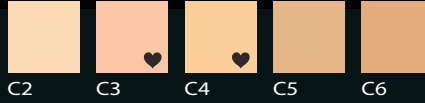


## FEATURES

- more matte finish than mineral loose foundation
- full coverage when applied with sponge
- lighter coverage when applied with kabuki or we prefer the flat buffer brush
- silky smooth feel and application

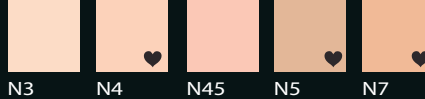
**C**

warm yellow tones



**N**

cool neutral tones



INGREDIENTS: Mica, Dimethicone, Zinc Stearate, Nylon-12, Caprylyl Glycol, Phenoxyethanol, Hexylene Glycol, Tocopherol, Ascorbyl Palmitate. May Contain: Iron Oxides, Titanium Dioxide, Ultramarines

# MINERAL FOUNDATION

LOOSE POWDER JAR

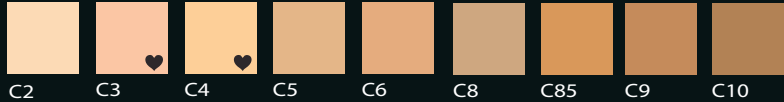


## FEATURES

- natural look and feel
- stays on all day with one application
- ideal for sensitive skins
- has slight natural sheen to give dewy healthy look to skin
- you control amount of coverage depending on how much is applied
- apply to face with kabuki brush or flat top brush, tap off excess powder

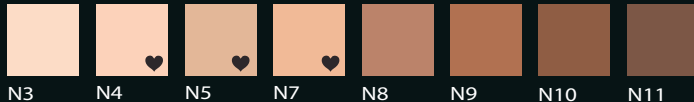
**C**

warm yellow tones



**N**

cool neutral tones



INGREDIENTS: Mica, Zinc Stearate, Magnesium Carbonate, Simmondsia Chinensis (Jojoba) Seed Oil, Phenoxyethanol, Caprylyl Glycol, Polysorbate 20, Sorbic Acid. May contain: Titanium Dioxide, Iron Oxides, Red #6 Lake, Red #7 Lake, Red #27 Lake, Blue #1 Lake, Yellow #5 Lake, Yellow #6 Lake, Bismuth Oxochloride, Chromium Oxide Green, Chromium Hydroxide Green, Ferric Ferrocyanide, Manganese Violet, Ultramarines, Tin Oxide.



mineral mattifier  
matifiant minéral

AS  
finishing  
minerals  
bottle mat

NET WT./POIDS NET 15g./0.5 US OZ



# MINERAL MATTIFIER

FINISHING MINERALS

## FEATURES

- removes all unwanted shine
- perfect for mid-day touch ups
- lightweight
- leaves no color deposit
- can be used alone or on top of foundation



translucent

INGREDIENTS: Zea Mays (Corn) Starch, Zinc Stearate, Magnesium Carbonate, Phenoxyethanol, Caprylyl Glycol, Sorbic Acid. May contain: Mica, Titanium Dioxide, Iron Oxides, Red #6 Lake, Red #7 Lake, Red #27 Lake, Blue #1 Lake, Yellow #5 Lake, Yellow #6, Bismuth Oxochloride, Chromium Oxide Green, Ferric Ferrocyanide, Manganese Violet, Ultramarines, Tin Oxide.



AS

pigments

NET WT./POIDS NET



# HI-DEF PIGMENTS

CRUSHED MINERALS

## FEATURES

- never diluted just intense pigment
- use with transfix transformer as an eyeliner
- use as is, as a translucent eyeshadow
- use with a clear lipgloss to make any shade of lipgloss
- use with hair gel and apply to hair
- apply directly on the center of lips for a pop of color
- use with a moisturizer or body lotion to give body a sexy sheen
- use with clear nail enamel to make intense colours

1 flambe	2 no brainer	3 fake it	4 mood boost	5 light touch	6 bubbles	7 performer	8 embellish	9 silverado	10 no fear	11 sci-fi	201 sunshine
202 girlie	203 micro	204 surfin	205 purest	206 cognac	207 metalico	208 halogen	209 sunkist	210 angelic	211 luster	212 air	213 wicked
214 solar	215 eden	216 poison	217 starlight	218 feisty	219 jet set	220 worship	222 tia maria	226 tabu	228 va-voom	229 corset	230 mink-stole
233 surge	235 mis-chief	236 sashay	238 du jour	239 new crush	242 awesome	243 patina	244 fifi	245 creme caramel	246 cachet	247 ignite	249 a-list
250 bar hop	252 peacock	253 goldlocks	255 pretty baby	257 traction	258 sunset	260 forgive	261 passion	262 mellow	263 ooopps	264 marsh mellow	265 addicted
266 romeo	267 over dose	268 fire up									

INGREDIENTS: Mica & Titanium Dioxide. May contain: Ferric Ferrocyanide, Carmine, Chromium Oxide Greens, Iron Oxides, Tin Oxide.



# MINERAL EYESHADOW

PRESSED SHADOW

## FEATURES

- large eyeshadow pan size
- triple milled
- intense pigmentation
- long wear formula



INGREDIENTS: Mica, Jojoba Oil, Zinc Stearate, Boron Nitride, Magnesium Carbonate, Phenoxyethanol, Caprylyl Glycol, Sorbic Acid. May contain: Aluminum Oxide, Bismuth Oxochloride, Carmine, Chromium Hydroxide Green, Chromium Oxide Green, Ferric Ferrocyanide, Iron Oxides, Manganese Violet, Tin Oxide, Titanium Dioxide, Ultramarines.

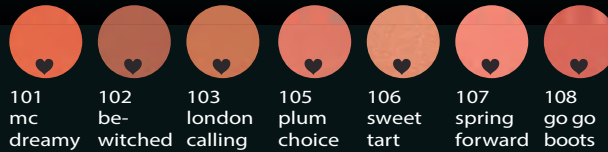


# MINERAL BLUSH

PRESSED BLUSH

## FEATURES

- 7 complexion boosting shades
- triple milled formula
- long wear formula
- both pearl and matte available
- can also be used as eyeshadow
- we took our top selling blush colours in our traditional line and reformulated them into our exclusive mineral formula



INGREDIENTS: Mica, Simmondsia Chinensis (Jojoba) Seed Oil, Zinc Stearate, Boron Nitride, Magnesium Carbonate, Phenoxyethanol, Caprylyl Glycol, Silica, Sorbic Acid. May contain: Mica, Titanium Dioxide, Iron Oxides, Red #6 Lake, Red #7 Lake, Red #27 Lake, Blue #1 Lake, Yellow #5 Lake, Yellow #6, Bismuth Oxochloride, Chromium Oxide Green, Ferric Ferrocyanide, Manganese Violet, Ultramarines, Tin Oxide.

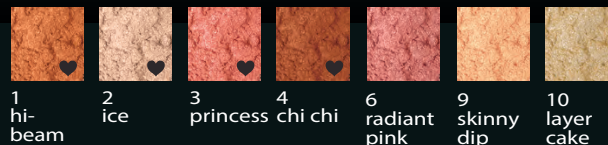


# MINERAL ICING SUGAR

FACE & BODY SHIMMER POWDER

## FEATURES

- hi shine shimmer dusting powders
- can be used as blush
- highlight points of the face or body
- use on bridge of nose, under brow bone, collarbone or top of cheekbones for definition or just a pop of color



INGREDIENTS: Mica, Silica, Boron Nitride, Simmondsia Chinensis (Jojoba) Seed Oil, Magnesium Carbonate, Zinc Stearate, Phenoxyethanol, Caprylyl Glycol, Sorbic Acid. May Contain: Titanium Dioxide, Iron Oxides, Red #6 Lake, Red #7, Red #27, Blue #1, Yellow #5 Lake, Yellow #6, Bismuth Oxochloride, Chromium Oxide Green, Chromium Hydroxide Green, Ferric Ferrocyanide, Manganese Violet, Ultramarines, Tin Oxide.



# MINERAL BRONZER

PRESSED POWDER COMPACT

## FEATURES

- gives a sunkissed glow to skin without the harsh effects of the sun
- most wearable shade can be worn on almost every skin tone
- slight pearl finish
- can be worn alone or on top of foundation



laguna

INGREDIENTS: Mica, Dimethicone, Zinc Stearate, Nylon-12, Caprylyl Glycol, Phenoxyethanol, Hexylene Glycol, Tocopherol, Ascorbyl Palmitate. May contain: Iron Oxides, Titanium Dioxide, Ultramarines.



# MINERAL BRONZER

LOOSE POWDER JAR

## FEATURES

- gives a bronze glow to skin without the sun
- slight pearl finish
- best applied with kabuki brush or flat top buffer brush



1 bronze envy  
2 warm glo

INGREDIENTS: Mica, Zinc Stearate, Magnesium Carbonate, Simmondsia Chinensis (Jojoba) Seed Oil, Phenoxyethanol, Caprylyl Glycol, Polysorbate 20, Sorbic Acid. May Contain: Titanium Dioxide, Iron Oxides, Red #6 Lake, Red #7 Lake, Red #27 Lake, Blue #1 Lake, Yellow #5 Lake, Yellow #6 Lake, Bismuth Oxide, Chromium Oxide Green, Chromium Hydroxide Green, Ferric Ferrocyanide, Manganese Violet, Ultramarines, Tin Oxide.



5gm shadow

5gm mattifier

10gm foundation

# MINERAL TRAVEL

SAMPLER

## CONTAINS

- a mini mineral collection
  - 10gm mineral foundation
  - 5gm mineral mattifier
  - 5gm mineral pigment shadow
- comes with all the brushes you need all in a zippered leather case
- perfect for travel or sampling

code: MSA

# REFILLS & PALLETS

Flexibility to custom create your own pallets. Order what you want when you want



**AS SAFFAT**  
COSMETICS SKINCARE

# REFILLABLE EMPTY PALLETS

REFILLS SEPARATE

## BROWS



2 Well Pallet (duo)  
& mirror  
YBP2



3 Well Pallet  
& mirror  
YEP3



5 Well Pallet  
& mirror  
YBP5

## LIPS



3 Well Pallet  
& mirror  
YEP3



5 Well Pallet  
& mirror  
YEP5



Lipgloss Pots Pallet  
Y6PP

## CHEEKS



6 Well Pallet  
& mirror  
HYEP6



11 Well Pallet & mirror  
9 Eyeshadow/2 Blush  
HYEP2/9



# REFILLS

## BROW/WAX SHADOW REFILLS



Available for:

- 2 well pallet
- 3 well pallet
- 5 well pallet

## EYESHADOW REFILLS



Available for:

- 2 well pallet
- 3 well pallet
- 5 well pallet
- 11 well pallet
- 12 well pallet

## LIPSTICK REFILLS



Available for:

- 3 well pallet
- 5 well pallet

## BLUSH REFILLS



Available for:

- 6 well blush pallet
- 11 well pallet

## DUAL POWDER REFILLS



Available for:

- large pan 6 well

## CREAM FOUNDATION REFILLS



Available for:

- large pan 6 well

## PRESSED TRANSLUCENT PRESSED POWDER REFILLS



Available for:

- large pan 6 well

## MINERAL BRONZER & FOUNDATION REFILLS



Available for:

- large pan 6 well

## BRONZER REFILLS



Available for:

- large pan 6 well

# REFILLABLE EMPTY PALLETS

REFILLS SEPARATE

## EYES



2 Well Pallet (duo)  
& mirror  
YEP2



3 Well Pallet  
& mirror  
YEP3



5 Well Pallet  
& mirror  
YEP5

## EYES



12 Well Pallet & mirror  
HYEP12



11 Well Pallet & mirror  
9 Eyeshadow/2 Blush  
HYEP2/9

## FACE



Large Pan 6 Well Pallet  
Dual Powder or  
Cream Finish or Pressed Powder  
YEPDP



# MOUSSE FOUNDATION

PERFECT BALANCE

## FEATURES

- cream to powder
- light velvety texture
- light-medium coverage
- matte finish
- visibly reduces appearance of fine lines
- powder is optional
- non comedogenic



warm yellow tones



C3



C4



C6



cool neutral tones



N4



N5



N7

INGREDIENTS: Cyclomethicone, Isononyl Isononanoate, Dimethicone Crosspolymer, Dimethicone, Phenyl Trimethicone, Mica, Isopropyl Titanium Triisostearate, Silica, Phenoxyethanol, Tocopheryl Acetate, Fragrance, Titanium Dioxide, Iron Oxide.



# BB CREAM

TINTED MOISTURIZER

## FEATURES

- part skin care, part makeup
- 100% amazing
- hydrating, protecting with a sheer radiant coverage
- provides superior skin protection that may prevent premature skin aging and darkening
- produces a very natural, no makeup look



fair



light



light medium



medium



dark

INGREDIENTS: Water (Aqua), Ethylhexyl Methoxycinnamate, Ethylhexyl Salicylate, Benzophenone-3, Glyceryl Stearate, Glycerin, Butylene Glycol, PEG-40 Stearate, Dimethylsiloxane, Phenoxyethanol, Dimethicone, Phenyl Trimethicone, Squalane, Cetyl Alcohol, Lecithin, Octyldodecyl Stearoyl Stearate, Xanthan Gum, Chlorphenesin, Sodium Dehydroacetate, Stearic Acid, Ammonium Acryloyldimethyltaurate/VP Copolymer, Aluminum Hydroxide, Tocopheryl Acetate, Silica, Sodium PCA, Laminaria Saccharina Extract, Caffeine, Aloe Barbadensis Leaf Extract, Allantoin, Cucumis Sativus (Cucumber) Fruit Extract, Disodium EDTA. May contain: Iron Oxides, Titanium Dioxide.



# TRANSLUCENT PRESSED

POWDER

## FEATURES

- removes oil and shine with no buildup
- totally translucent
- blots oil without cakiness
- weightless and invisible
- will not settle into fine lines



warm yellow tones



C25



C6



C95



C10



C11



cool neutral tones



N4



N5



N85



N10

## TIPS:

Apply with brush only for light effective results.

INGREDIENTS: Talc, Calcium Carbonate, Tricaprylin, Imidazolidinyl Urea, Ascorbyl Palmitate. May contain: Iron Oxides, Titanium Dioxide.



# HI-DEF INVISIBLE BLOTTING

## PRESSED POWDER

### FEATURES

- removes oil and shine with no buildup
- no coverage
- totally translucent
- blots oil without cakiness
- weightless and invisible
- will not settle into fine lines



transparent

### TIPS:

Apply with brush only for light effective results. Darker skin tones use color suited shades to avoid ashiness .

INGREDIENTS: Talc, Calcium Carbonate, Tricaprylin, Imidazolidinyl Urea, Ascorbyl Palmitate. May contain: Iron Oxides, Titanium Dioxide.



# HI-DEF POWDER

## LOOSE

### FEATURES

- velvet feel loose powder
- completely colourless
- creates matte finish
- for all skin tones
- removes oil without cakiness
- 100% invisible



400  
transparent

INGREDIENTS: Zea Mays (Corn) Starch, Talc, Silica, Phenoxyethanol, Caprylyl Glycol, Aqua, Carthamus Tinctorius (Safflower) Seed Oil, Aloe Barbadensis Leaf Extract, Calendula Officinalis Flower Extract, Chamomille Recutita (Matricaria) Flower Extract, Sorbic Acid.



# LOOSE POWDER

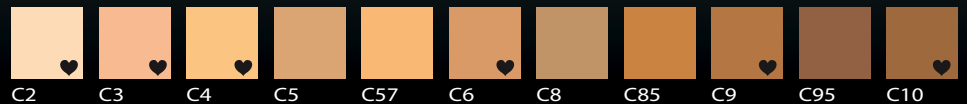
## TRANSLUCENT

### FEATURES

- lightweight powder that removes shine or oil without buildup
- matches skintone without buildup
- mattifies skin
- contains oil absorbing powders
- will not settle into fine lines



warm  
yellow  
tones



cool  
neutral  
tones



INGREDIENTS: Talc, Zinc Stearate, Octyldodecyl Stearoyl Stearate, Phenoxyethanol, Caprylyl Glycol, Sorbic Acid. May contain Mica, Titanium Dioxide, Iron Oxides, Red #6 Lake, Red #7 Lake, Red #27 Lake, Blue #1 Lake, Yellow #5 Lake, Yellow #6 Lake, Bismuth Oxychloride, Chromium Oxide Green, Chromium Hydroxide Green, Ferric Ferrocyanide, Manganese Violet, Ultramarines, Tin Oxide.



# ACCESSORIES

Tools of the trade

Key pieces needed for the ARTIST  
to complete the task of a perfect  
makeup service.

Packaged to use in a  
professional makeup kit.

**Brushes  
Sponges  
Makeup Charts  
& Other Accessories**

**AS SAFFAT**

**COSMETICS SKINCARE**

# GRAPHITE

NON-SHEDDING ARTIST BRUSHES PROFESSIONALLY BOXED



## BRUSHES

VARIETY

FEATURES



## MINERAL

VEGAN BRUSHES

FEATURES

- non-shedding
- contains no animal hairs
- all brushes boxed



# 6PC BRUSH SET

MAKEUP CASE



code: 6PPB

# 7PC BRUSH SET

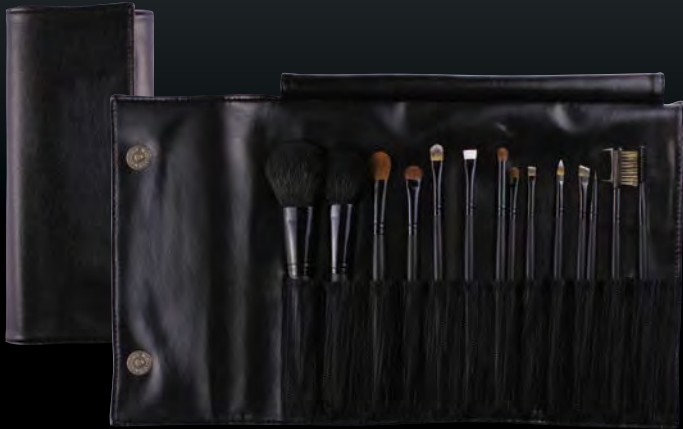
MAKE UP CASE



code: 7PC

# 14PC BRUSH SET

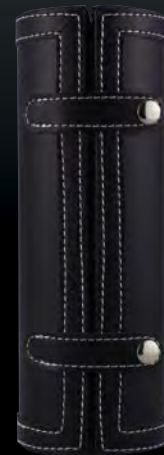
MAKEUP CASE



code: 14PC

# HARD SHELL CASE

COSMETIC HOLDER

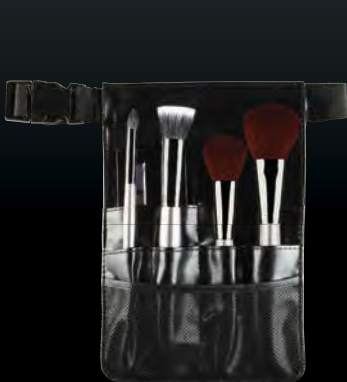


code: HSC

# APRONS

MAKEUP CASE

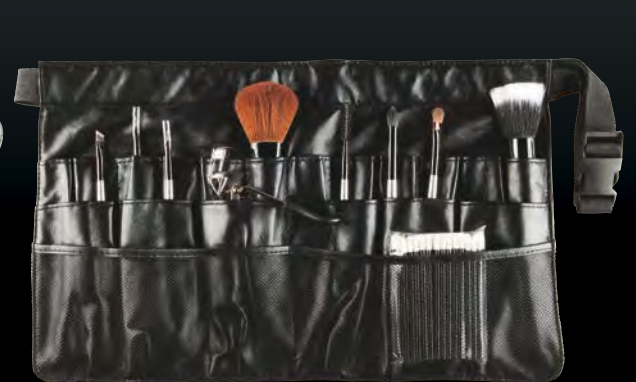
- style meets function
- 3 sizes to choose from
- adjustable belts with clips



Small Apron code: BA1



Medium Apron code: BA2



Large Apron code: BA3



# 6 TRAY

MAKEUP CASE

FEATURES

- 6 folding trays



code: AL0092

# 4 TRAY

MAKE UP CASE

FEATURES

- 4 folding trays



code: AL0042

# STUDIO CASE

WHEELLY

FEATURES

- six folding trays with pockets inside to hold things in place



code: ALBA20-1

# SOFT SHELL

ZIPPER MAKE UP CASE

FEATURES

- 



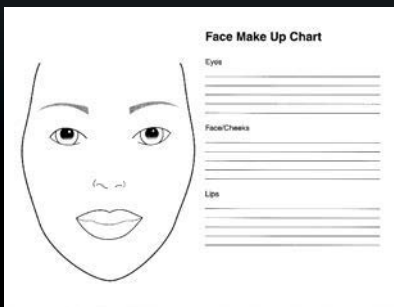
code: WB-28B

# CHART

MAKEUP

FEATURES

- 50 pages



code: FMC

# TESTER POTS

WITH LABELS

FEATURES

- 25pk black mini tester pots
- 5gm size



code: TP25

# MIX PLATE

STAINLESS STEEL

FEATURES

- professional stainless steel mix plate and applicator



code: SSMP

# DISPOSABLE APPLICATORS



## LIPBRUSHES

- nylon lip brush with black handle
- 25pcs/pack

code: DISL



## SHADOW

- foam tip with black handle
- 25pcs/pack

code: AP



## MASCARA

- full head mascara brush
- 25pcs/pack

code: DISM



## LIPGLOSS

- doe foot lipgloss applicator
- 50pcs/pack

code: DISG



## SPATULA

- plastic handle
- 25pcs/pack

code: SPA

## SPONGE DUAL POWDER

### FEATURES

- premium dual sponge available as refills for compacts



code: YDPS

## SPONGE OBLONG FOAM

### FEATURES

- latex free blending sponge
- washable

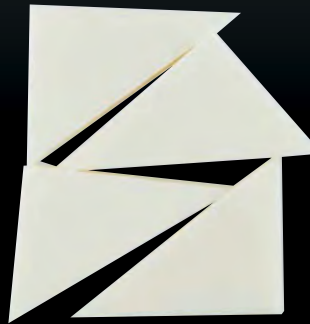


code:

## WEDGES FOAM WHITE

### FEATURES

- 8 piece latex free wedge block



code: WE

## WEDGES FOAM BLACK

### FEATURES

- 24 piece latex free wedge block

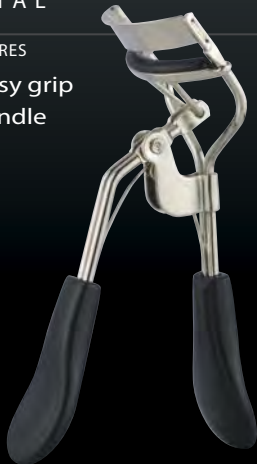


code: WE

## LASH CURLER METAL

### FEATURES

- easy grip handle

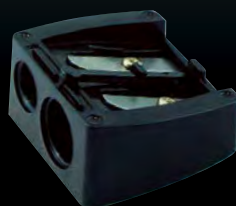


code: ELC

## SHARPENER DUAL

### FEATURES

- black dual sharpener
- \* not to be used with gel pencils



code: SHA

## SHARPENER GEL PENCILS

### FEATURES

- a must for gel pencils



code: GSHA

## COVERS CLEAR LIPSTICK

### FEATURES

- available in 8pk / 28pk / 40pk



code:  
LSC8 / LSC28 / LSC40

**BOTANICAL** based skincare

Gentle, **UNCOMPLICATED**  
uncomplicated and extremely  
**EFFECTIVE.**

# SKINCARE

The Power of Simple

# BOTANICAL INFO

Botanical refers to natural ingredients derived from plants that are beneficial to skin and are non-allergenic.

---

## ALMOND OIL

Lighter than olive oil it provides excellent lubricating and penetrating properties. Contains vitamins and minerals.

---

## ALOE VERA

Is a bitter herb with anti-inflammatory properties. It is a cellular regenerator and has antibacterial effects. Aloe Vera gel can be applied to skin as a softening agent and has wonderful astringent qualities.

---

## ANTIOXIDANTS

Believed to prevent and control numerous ailments by safeguarding cells against the ravages of unstable oxygen molecules called "free radicals".

---

## AVOCADO OIL

Avocado Oil is a rich and extremely penetrating oil rich in vitamins A, D and E. Known as the youth mineral it contains more than 20% essential unsaturated fatty acids. It can help heal the skin, reduce age spots and sun damage. It increases collagen levels in the skin and is used for its moisturizing and nourishing compounds for dehydrated skin.

---

## CHAMOMILE EXTRACT

Soothes irritated and problematic skin. It has flavonoids that can diminish skins blemishes and assist in healing.

---

## CUCUMBER EXTRACT

A natural astringent. Helps tighten pores and imparts a soothing feeling. It is also an excellent anti-inflammatory and skin soother.

---

## GRAPE SEED EXTRACT

Rich in flavonoids, phytochemicals that have antioxidant properties like Vitamin C and E.



---

## JOJOBA OIL

The history of Jojoba is well documented. This thick waxy oil is also similar to sebum (human skin) and penetrates quite readily. Jojoba is an excellent moisturizer and offers cellular renewal.

---

## JAPANESE GREEN TEA

Reported to fight damage from excessive sun and environmental damage. Primarily this ancient Asian plant has the ability to prevent free radicals from damaging cell structures further.

---

## SHEA BUTTER

Derived from the karite tree of Africa, this thick "butter" has variety of skin benefits. Moisturizing and nourishing, some ability for cellular renewal and has a natural low level of UV protection for the skin.

# EASY AS 1,2,3

---

## STEP 1: CHOOSE YOUR SKIN TYPE

### OILY SKIN

Eye makeup remover p.m.

1. WASH - Chamomile Facial Wash
2. EXFOLIATE - Mint Exfoliating Facial Polish\*
3. TONE - Botanical Firming Toner
4. FIRM - Firming Face And Eye Serum
5. PROTECT - Protective Jojoba Day Moisturizer
6. MASK - Mineral Mud Mask 1-2x per week  
\*exfoliate daily if no blemishes

### DRY SKIN

Eye makeup remover p.m.

1. CLEANSE - Botanical cleansing lotion
2. EXFOLIATE - Mint exfoliating Facial Polish\*
3. TONE - Botanical Firming Toner
4. FIRM - Firming Face And Eye Serum
5. HYDRATE - Hydrating mango face cream
6. RESTORE - Botanical face cream w/deep lime complex
7. MASK - mineral mud mask once a week  
\*exfoliate (mix with cleansing lotion) daily if no blemishes

### COMBINATION SKIN

Eye makeup remover p.m.

1. WASH - Chamomile Facial Wash
2. EXFOLIATE - Mint Exfoliating Facial Polish\*
3. TONE - Botanical Firming Toner
4. FIRM - Firming Face And Eye Serum
5. PROTECT - Protective Jojoba Day Moisturizer
6. MASK - Mineral Mud Mask 1-2x per week  
\*exfoliate daily if no blemishes

### NORMAL TO DRY SKIN

Eye makeup remover p.m.

1. CLEANSE - Botanical cleansing lotion
2. EXFOLIATE - Mint exfoliating Facial Polish\*
3. TONE - Botanical Firming Toner
4. FIRM - Firming Face And Eye Serum
5. HYDRATE - Hydrating mango face cream
6. RESTORE - Botanical face cream w/deep lime complex
7. MASK - mineral mud mask once a week  
\*exfoliate (mix with cleansing lotion) daily if no blemishes

## STEP 2: USE PRODUCT DAILY

## STEP 3: LOVE YOUR SKIN

# AVAILABLE SIZES

PICK AND CHOOSE WHAT'S BEST



10ml    20ml    40ml    120ml    120ml    240ml    900ml cabine

remove	•		•				•
cleanse	•		•			•	•
wash	•		•			•	•
exfoliate				•			•
tone	•		•				•
protect	•		•	•			•
hydrate	•		•	•			•
restore	•		•	•			•
essential		•					
firm	•		•	•			
lighten	•		•	•			
mask				•			
nourish				•			•
rejuvenate						•	



40ml

120ml

# REMOVE

OIL FREE EYE MAKE UP REMOVER

ALL SKIN TYPES

A soothing, non-irritating, oil-free formula that removes makeup from the delicate eye area. Leaves no oily residue. Fragrance free.

### CONTAINS

- Cucumber Fruit Extract
- Chamomile Flower Extract
- Non-irritating
- Oil Free, leaves no residue
- Fragrance free
- Eye makeup can be re-applied instantly

### DIRECTIONS

Pour a small amount onto a cotton pad and gently wipe over entire eye area.

**INGREDIENTS:** De-Ionized Water, Disodium Cocoamphodiacetate, Vegetable Glycerin, Cucumis Sativus (Cucumber) Fruit Extract, Lactic Acid, Polysorbate 20, Tamarindus Indica Seed Extract, Chamomile Matricaria (Chamomile) Flower Extract, Phenoxyethanol and Caprylyl Glycol.



40ml

240ml

900ml cabine

# CLEANSE

BOTANICAL CLEANSING LOTION

ALL SKIN TYPES

A gentle mild cleansing milky lotion derived from Coconut and Sugar Beets. Contains Chamomile, Aloe, Cucumber and Japanese Green Tea to tighten, soothe and deliver antioxidants.

### CONTAINS

- Chamomile
- Aloe Vera
- Cucumber
- Japanese Green Tea

### DIRECTIONS

Pour a small amount into palm of hand and gently massage over wet or dry face. Rinse well. Pat dry. Can also be used to remove makeup. For deep cleansing, mix equal amounts of botanical cleansing lotion and exfoliating facial polish.

**INGREDIENTS:** De-Ionized Water/Aqua, Sodium Cocoamphoacetate, Decyl Glucoside, Sucrose Cocoate, Cocamide MIPA, Glyceryl Stearate, Chamomilla Recutita (Matricaria) Flower Extract (Chamomile), Aloe Barbadensis Leaf Juice, Cucumis Sativus (Cucumber) Fruit Extract, Camellia Sinensis (Japanese Green Tea) Leaf Extract, Emulsifying Wax NF, Phenoxyethanol (and) Caprylyl Glycol, Fragrance.

# WASH

CHAMOMILE FACIAL WASH

ALL SKIN TYPES



40ml

240ml

900ml cabine

A light foaming gentle gel face wash that is suitable for all skin types. Mild cleansing will leave your skin clean without harsh chemicals.

## CONTAINS

- Chamomile
- Red Clover
- Elderflower Extracts
- White Willow Bark extract

## DIRECTIONS

No need to wet face, gently massage over entire face. Rinse well. Use morning and night.

**INGREDIENTS:** Aqua, Alkyl Polyglucosides, Cocamidopropyl Betaine, Sodium Cocoamphoacetate, Acrylates Copolymer, Vegetable Glycerine, Salix Alba (White Willow) Bark Extract, Chamomilla Recutita (Matricaria) Flower Extract (Chamomile), Aqua (and) Trifolium Pratense (Red Clover) Extract, Sambucus Nigra (Elder) Flower Extract, Phenoxyethanol (and) Caprylyl Glycol.

# EXFOLIATE

MINT EXFOLIATING FACIAL POLISH

ALL SKIN TYPES



120ml

900ml cabine

A gentle face polish with ingredients derived from sugar, for a mild deep cleanse. Apricot Oils smooth and clean skin without drying.

## CONTAINS

- Apricot Oils
- Lemon
- Apple
- Aloe Vera
- Green Tea
- Sugar Cane
- Seaweed

## DIRECTIONS

Apply onto dry, cleansed skin. Rinse clean with water OR mix with botanical cleansing lotion to create a gentle cleansing exfoliator for the face. Use 2-3 times per week or as needed. Avoid eye area. Mature or dry skins can use daily.

**INGREDIENTS:** Aqua (Water), Decyl Glucoside, Polyethylene, Glycerin, Cocamide MEA, Cocamidopropyl Betaine, Glyceryl Stearate, Cetearyl Alcohol, Cetearyl Glucoside, Prunus Armeniaca (Apricot) Kernel Oil, Triethanolamine, Carbomer, Saccharum Officinarum (Sugar Cane) Extract, Citrus Medica Limonum (Lemon) Fruit Extract, Pyrus Malus (Apple) Fruit Extract, Camellia Sinensis Leaf Extract, Aloe Barbadensis Leaf Juice, Fucus Vesiculosus (Bladderwrack) Extract, Eucalyptus Globus Leaf Oil, Menthol, Parfum (Fragrance), Methylchloroisothiazolinone, Methylisothiazolinone.





40ml

120ml

# TONE

BOTANICAL FIRMING TONER

ALL SKIN TYPES

A very gentle botanical toner containing Aloe Vera, Chamomile and Japanese green tea to rejuvenate the skin and Cucumber Extract to help tighten pores. Botanicals, extracts and marine minerals help promote skin firmness. Contains no alcohol.

## CONTAINS

- Japanese Green Tea (to rejuvenate the skin)
- Grapefruit Seed Extract
- Aloe Vera
- Chamomile Flower Extract
- Cucumber Extract (to tighten pores)

## DIRECTIONS

Apply with a cotton pad or directly with your fingertips. Use on clean skin, before serum or moisturizer.

**INGREDIENTS:** De-Ionized Water/Aqua, Glycerin, Tamarindus Indica Seed Extract (Tamarind), Cucumis Sativus (Cucumber) Fruit Extract, Chamomile Recutita (Matricaria) Flower Extract, Aloe Barbadensis (Aloe Vera) Leaf Juice, Camellia Sinensis (Japanese Green tea) Leaf Extract, Quaternized Wheat Protein, Saccharomyces / Sea Salt Ferment (Biom in), Allantoin, Polysorbate 20, Disodium EDTA, Citrus Grandis (Grapefruit Seed Extract), Phenoxyethanol (and) Caprylyl Glycol, Fragrance.

# PROTECT

PROTECTIVE JOJOBA DAY MOISTURIZER

ALL SKIN TYPES



40ml

120ml

900ml cabine

A daily moisturizer with an excess of 18% oils of Jojoba, Avocado and Grape Seed, 2% Shea Butter, Vegetable Glycerin and Vitamin A. Provides a soft finish and ensures smooth makeup application.

## CONTAINS

- 18% oils of Jojoba
- 18% oils of Avocado
- 18% oils of Grape Seed
- 2% Shea Butter
- Vegetable Glycerin
- Antioxidant Vitamin E

## DIRECTIONS

Apply daily on cleansed and toned skin (after serum).

**INGREDIENTS:** De-Ionized Water, Aloe Barbadensis Leaf Juice, Persea Gratissima (Avocado Seed) Oil, Simmondsia Chinensis (Jojoba Seed) Oil, Vitis Vinifera (Grape Seed) Oil, Vegetable Glycerin, Caprylic/Capric Triglycerides, Butyrospermum Parkii (Shea Butter), Stearic Acid, Glyceryl Stearate, Cyclomethicone, Tocopherol, Cetyl Alcohol, Phenoxyethanol (and) Caprylyl Glycol, Fragrance.

# HYDRATE

HYDRATING MANGO FACE CREAM

NORMAL TO DRY SKIN



40ml

120ml

900ml cabine

A daily hydrating cream containing the moisturizing properties of hyaluronic acid. Eases fine lines and smoothes skin surface with a slight "plumping" action. This velvety formula also contains a natural blend of 5 oils and exotic mango and Shea Butter, to increase skin elasticity and ease dryness.

#### CONTAINS

- Natural blend of 5 oils
- Olive
- Almond
- Avocado
- Sunflower
- Grape Seed
- Aloe Vera gel
- Exotic Mango Butter
- Shea Butter
- Antioxidant Vitamin E

#### DIRECTIONS

Apply daily on cleansed and toned skin (after serum). Day and night.

**INGREDIENTS:** Aloe Barbadensis Leaf Juice, Butyrospermum Parkii (Shea Butter), Mangifera Indica (Mango Butter) Seed Oil, Olea Europaea (Olive) Oil, Prunus Dulcis (Almond) Oil, Persea Gratissima (Avocado) Oil, Helianthus Annuus (Sunflower) Seed Oil, Vitis Vinifera (Grape) Seed Oil, Caprylic /Capric Triglycerides, Vegetable Glycerin, Sodium Hyaluronate, Palm Stearate, Glyceryl Stearate, Cetyl Alcohol, Tocopherol, Cyclomethicone, Triethanolamine, Phenoxyethanol (and) Caprylyl Glycol, Fragrance.

# RESTORE

BOTANICAL FACE CREAM W/DEEP LINE COMPLEX

NORMAL TO DRY/SENSITIVE SKIN



40ml

120ml

900ml cabine

A velvety, emollient cream for skin that requires more oils without a greasy feel. Extremely mild, excellent for sensitive skins.

#### CONTAINS

- Jojoba
- Avocado
- Aloe Vera Gel
- Grape Seed Oils
- Green Tea
- 4% African Shea Butter
- Antioxidant Vitamin E

#### DIRECTIONS

Apply daily on cleansed and toned skin (after serum). Day and night.

**INGREDIENTS:** De-Ionized Water, Aloe Barbadensis Leaf Juice, Persea Gratissima (Avocado Seed) Oil, Simmondsia Chinensis (Jojoba) Seed Oil, Vitis Vinifera (Grape Seed) Oil, Vegetable Glycerin, Butyrospermum Parkii (Shea Butter), Caprylic/Capric Triglyceride, Squalane, Olea Europaea) Olive Extract, Palm Stearate, Glyceryl Stearate, Cyclomethicone, Dioscorea Villosa (Wild Yam) Root Extract, Glycine Soja (Soybean) Sterols, Palmitoyl Pentapeptide-3, Cucumis Sativus (Cucumber) Fruit Extract, Vitis Vinifera (Grape) Fruit Extract, Bladderwrack, Saccharomyces/Sea Salt Ferment, Paullinia Cupana (Guarana) Fruit Extract, Chamomilla Recutita (Matricaria) Flower Extract (Chamomile), Vegetable Glycerin, Camellia Sinensis (Japanese Green Tea) Leaf Extract, Quaternized Wheat Protein, Ganoderma Lucidum (Mantake Mushroom) Extract & Lentinus Edodes (Shiitake Mushroom) Extract & Algae Extract, Tocopherol, Cetyl Alcohol, Phenoxyethanol (and) Caprylyl Glycol, Fragrance.

# ESSENTIAL

OMEGA 3 FACE SERUM

NORMAL TO DRY SKIN



20ml

A light weight oil containing powerful moisturizing agents packed with nutrients. A velvet mattifying effect with no greasy after feel. All natural, cold pressed cranberry seed oil with high antioxidant levels makes this an excellent moisturizer with superior skin conditioning properties.

#### CONTAINS

- Macadamia Oil
- Passion Fruit Oil
- Omega 3
- Omega 6
- Omega 9 (fatty acids)
- Cranberry Seed Oil
- Sweet Almond Oil
- Avocado Oil

#### DIRECTIONS

Apply to face and neck area, after toner, before moisturizer at night.

**INGREDIENTS:** Persea Gratissima (Avocado) Oil, Macadamia Terrifolia Seed Oil, Prunus Amygdalus Dulcis (Sweet Almond) Oil, Passiflora Edulis Seed Oil, Glycine Soja (Soybean) Oil, Tocopheryl Acetate, Vaccinium Macrocarpon (Cranberry) Seed Oil, Fragrance.

# FIRM

FIRMING FACE & EYE SERUM

ALL SKIN TYPES



40ml

120ml

An oil-free, multi-benefit serum that improves the skin's appearance. Helps prevent visible signs of aging. Specifically effective in reducing dark circles under eyes as well as, firming and tightening the entire eye area. After 2-4 months of use, skin looks firmer, smoother. Fragrance free.

#### CONTAINS

- Aloe Vera Gel
- Vegetable Glycerin
- Cucumber Fruit Extract
- Peptides

#### DIRECTIONS

Apply on clean skin morning and night, before moisturizer. Massage a few drops gently into skin and allow to dry.

**INGREDIENTS:** De-Ionized Water, Aloe Barbadosis Leaf Juice, Vegetable Glycerin, Cucumis Sativus (Cucumber) Fruit Extract, Chrysin, Palmitoyl Oligopeptide, Hydroxysuccinimide, Palmitoyl Tetrapeptide-3, Palmitoyl Pentapeptide-3, Steareth-20, Polysorbate-20, Carbomer, Diazolidinyl Urea, Tetrasodium EDTA.

# LIGHTEN

BOTANICAL LIGHTENING CREAM

ALL SKIN TYPES



40ml

120ml

900ml cabine

A botanical based moisturizing cream containing Sophora Flavescens and Kiwi Root, targets specific pigmentation problems. A mango based moisturizer that evens out skin tones. (Not to be confused with a bleaching cream). We include 5 natural oils along with aloe, Vitamin E and Cucumber Extracts to enrich the skin.

#### CONTAINS

- Sophora Flavescens
- Kiwi Root

#### Natural Oils of:

Avocado, Grape Seed, Sweet Almond, Olive, Sunflower, Shea Butter, Mango Butters, Aloe Vera, Vitamin E, Cucumber Extracts.

#### DIRECTIONS

On cleansed skin, use daily as a moisturizer.

**INGREDIENTS:** Water/Aqua, Actinidia Chinensis (Kiwi) Fruit Extract, Sophora Angustifolia Root Extract, Olea Europaea (Olive) Fruit Oil, Prunus Amygdalus Dulcis (Sweet Almond) Oil, Persea Gratissima (Avocado) Oil, Helianthus Annus (Sunflower) Seed Oil, Vitis Vinifera (Grape) Seed Oil, Caprylic /Capric Triglyceride, Diacetyl Boldine, Butyrospermum Parkii (Shea Butter), Mangifera Indica (Mango) Seed Oil, Glycerin, Stearic Acid, Glyceryl Stearate, Cucumis Sativus (Cucumber) Fruit Extract, Cetyl Alcohol, Aloe Barbadensis Leaf Juice, Tocopherol, Phenoxyethanol, Caprylyl Glycol, Fragrance.

# MASK

MINERAL MUD MASK

ALL SKIN TYPES



120ml

An incredible mix of pure arctic mineral mud, containing no fillers. Unique toning mask to detoxify skin, leaving a baby smooth feel. The mud works by pulling out impurities from the skin. Leaves skin feeling beautifully firm after just one application.

#### CONTAINS

- Pure arctic Mineral Mud
- Grape Seed Oil
- Avocado Oil
- Jojoba Seed Oil
- Shea Butter
- Aloe
- Vitamin E
- Allantoin

#### DIRECTIONS

Apply with a brush or fingers and wait 20 minutes to dry. Rinse thoroughly. Avoid contact with eyes.

**INGREDIENTS:** De-Ionized Water, Mineral Clay, Vitis Vinifera (Grape Seed) Oil, Persea Gratissima (Avocado) Oil, Caprylic/Capric Triglycerides, Emulsifying Wax NF, Glyceryl Stearate, Simmondsia Chinensis (Jojoba) Seed Oil, Butyrospermum Parkii (Shea Butter), Aloe Barbadensis Leaf Juice, Palm Stearate, Tocopherol, Silk Amino Acids, Vegetable Glycerin, Methyl Cellulose, Allantoin, Phenoxyethanol (and) Caprylyl Glycol.

# REJUVENATE

OMEGA 3 HEMP BODY LOTION

ALL SKIN TYPES



240ml

A rich, all over body moisturizer packed with Hemp and Grape Seed Oils that replenish the skin. Vitamins and Botanicals make this lotion an incredible skin rejuvenator.

## CONTAINS

- Hemp Seed Oil
- Sunflower Oil
- Aloe Vera
- Grape Seed Oil
- Shea Butter
- Chamomile
- Sweet Almond Oil
- Japanese Green Tea
- Vitamin E

## DIRECTIONS

Massage over entire body. Use daily for soft, supple skin.

**INGREDIENTS:** De-Ionized Water, Cannabis Sativa (Hemp) Seed Oil, Vitis Vinifera (Grape) Seed Oil, Prunus Amygdalus Dulcis (Sweet Almond) Oil, Helianthus Annuus (Sunflower) Seed Oil, Caprylic/Capric Triglycerides, Emulsifying Wax NF, Vegetable Glycerin, Palm Stearate, Butyrospermum Parkii (Shea Butter), Aloe Barbadensis Leaf Juice, Chamomilla Recutita (Matricaria) Flower Extract (Chamomile), Tocopherol, Camellia Sinensis (Japanese Green Tea) Leaf Extract, Cetyl Alcohol, Glyceryl Stearate, Phenoxyethanol (and) Caprylyl Glycol, Fragrance.

# NOURISH

LUXURIOUS HAND CREAM

ALL SKIN TYPES



120ml

900ml cabine

A lightly scented, non greasy, quick absorbing hand cream that provides the ultimate level of hydration and nourishment. Complete with Botanical Oils and Vitamins.

## CONTAINS

- Avocado Oil
- Grape Seed Oil
- Shea Butter
- Vitamin A, C, D and E

## DIRECTIONS

Apply on the hands as needed.

**INGREDIENTS:** De-Ionized Water, Cannabis Sativa (Hemp Seed) Oil, Vitis Vinifera (Grape) Seed Oil, Prunus Amygdalus Dulcis (Sweet Almond) Oil, Helianthus Annuus (Sunflower) Seed Oil, Caprylic /Capric Triglyceride, Emulsifying Wax NF, Vegetable Glycerin, Palm Stearate, Butyrospermum Parkii (Shea Butter), Aloe Barbadensis Leaf Juice, Chamomilla Recutita (Matricaria) Flower Extract (Chamomile), Tocopherol, Camellia Sinensis (Japanese Green Tea) Leaf Extract, Cetyl Alcohol, Glyceryl Stearate, Phenoxyethanol (and) Caprylyl Glycol, Fragrance.



[www.as-saffat.com](http://www.as-saffat.com)